

K9JM CI-V Router User Guide for software version 1.11 March 2015

What can be supplied:

The K9JM CI-V Router is sold in two forms:

1. The CI-V interface board for the Arduino Mega 2560, assembled and tested
2. Full K9JM CI-V router. Assembled and tested. Includes
 - CI-V interface board
 - Arduino Mega 2560 Board
 - Modified Arduino Case
 - Power Supply (9volt 1Amp)
 - USB male A to USB male B, 6 feet

Note: International customers. The US Government requires an special export license to ship internationally "Advanced Microprocessors". The paper work and cost to acquire this license prohibits me from exporting "full systems".

The K9JM CI-V Router:

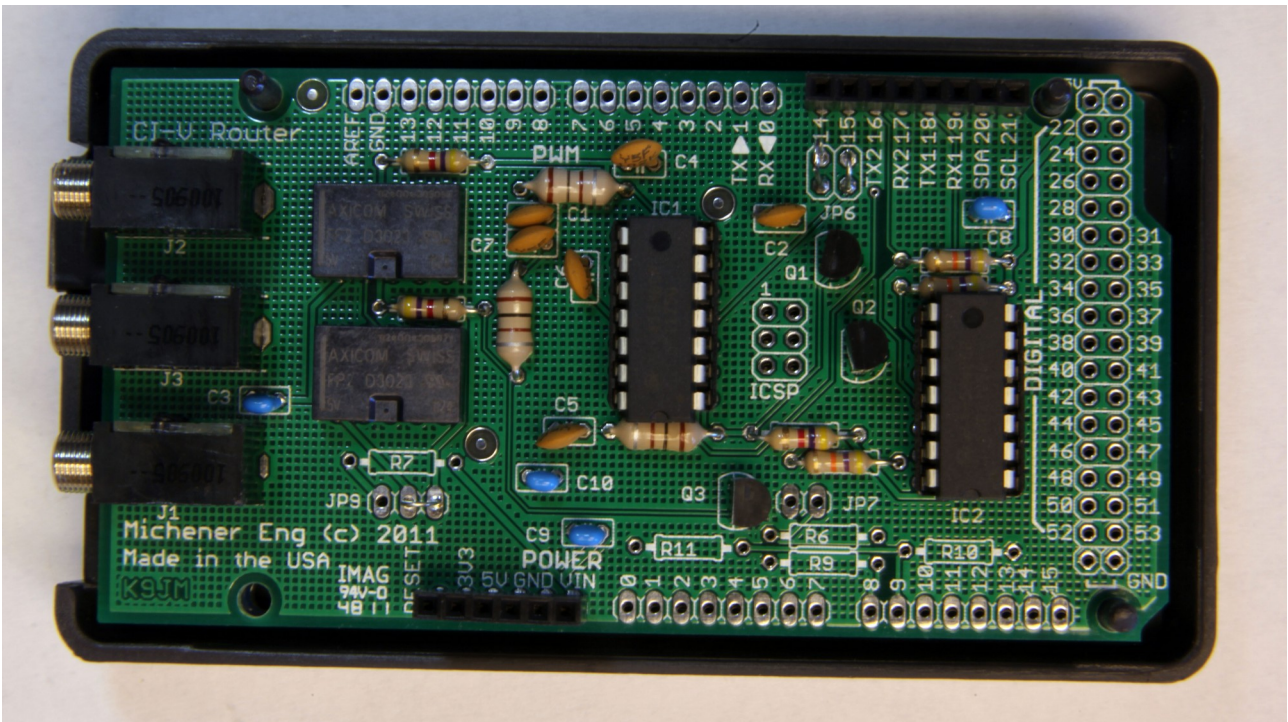


Illustration 1: CI-V Router Shield for the Arduino Mega 2560

The K9JM CI-V router is an Arduino stand alone computer, an Icom CI-V interface "shield" and software. The CI-V Arduino shield board is the board shown above. The software, both source code and prebuilt, ready to load binary code is available on the K9JM.com website.

To make a complete CI-V router, the following elements are suggested. Many people may wish to build this into their own enclosure and provide additional functionality. Below is the shopping list that comes with the "everything" option. The "everything" option comes programmed, tested and configured for CI-V at 9600 and the computer 38400 with "Transceive on". Read the CI-V router configuration for details. The device will be ready to wire and operate.

Many hams have well stocked junk boxes. Some of these items may already be found.

For the "everything" CI-V Router includes the following items, assembled and tested.

Item 1: Arduino Mega 2560 board

<http://arduino.cc/en/Main/ArduinoBoardMega2560>

Distributors for the Arduino board are listed:

<http://arduino.cc/en/Main/Buy>

Prices and available vary.

<http://www.nkcelectronics.com/arduino-mega-2560.html>

Item 2: Arduino case: A plastic case that can be easily modified to house the "stack" of the Arduino Mega board and the CI-V Router shield board.

<http://www.mouser.com/ProductDetail/Arduino/A000009/?qs=sGAepiMZZMs0PWRNvpRp0DTFs%2fiaewZY>

http://www.amazon.com/Arduino-Box-for/dp/B003ZKJNVY/ref=sr_1_4?ie=UTF8&qid=1328474339&sr=8-4

ITEM 3: USB A male to B male cable – These cables are everywhere. They are available at about any store that carries electronics in the world. If you're like me there are a dozen of them in your cable box.

http://www.amazon.com/AmazonBasics--Male-B-Male-Cable-Meters/dp/B001TH7GUA/ref=sr_1_5?ie=UTF8&qid=1328474923&sr=8-5

I would avoid the very cheap cables, but these have been know to work,

http://www.amazon.com/Black-Hi-Speed-Printer-Scanner-Lexmark/dp/B0030FP44Y/ref=sr_1_16?ie=UTF8&qid=1328474923&sr=8-16

ITEM 4: Wall power supply. OPTIONAL. The entire CI-V router can be powered off the USB, or it can be powered off an external power supply. The external power supply is handy when the router is in use when the computer is off. Note: If the CI-V router is powered down, a relay connects all the CI-V bus together, so communications between units will still occur, without the "protection" of the router. Must be capable of DC voltage between 7.0 and 10.0 volts at 150ma.

http://www.amazon.com/Wall-Adapter-Power-Supply-650mA/dp/B003XZSZWO/ref=sr_1_1?ie=UTF8&qid=1328474449&sr=8-1

ITEM 5: Male jumper. Used for putting the CI-V router into configuration mode. Any piece of bare wire will work

Wiring

Wiring is straight forward.

There is no difference between the three CI-V ports, so run a shield cable to each item.

Connect the USB cable, USB A male to the computer and the USB B male Arduino Board.

An optional wall mounted power supply can be connected to the CI-V router.

IMPORTANT: The router can be powered off the USB port, however when the computer is off, the router will "bypass" and connect all the ports together. Things will still be functional, but the router will be inactive. This is recommended **ONLY** when there are just two devices connected to the CI-V port.

IMPORTANT: The router at first opportunity after reset builds a table of discovered equipment on each port. IF you move anything from port to port of the CI-V router it is advised to **RESET** the CI-V router. This is done by hitting the reset button, or turning the router off by removing all power sources, including the USB.

Getting started

There are six steps that are necessary to get the CI-V Router up and running:

1. Installing Arduino USB Drivers (Windows only)
2. Downloading CI-V software to the Arduino board
3. Configure the CI-V Router
4. Configure your ICOM Radios
5. Configure the PC Host Software
6. Configure (sync) the PW-1 Amplifier (required if use with PW-1)

STEP ONE: Installing Arduino USB Driver and COM Port determination

Note: **When in doubt re-boot.** Whenever changing USB serial ports, it is my experience that a Windows reboot is almost always required if ****anything**** is changed. Installed a driver, change COM port number. When in doubt re-boot.

Obtain and install the Arduino USB Drivers for the Arduino Mega 2560. On the internet go to the Arduino software download site

<http://arduino.cc/en/Main/Software>

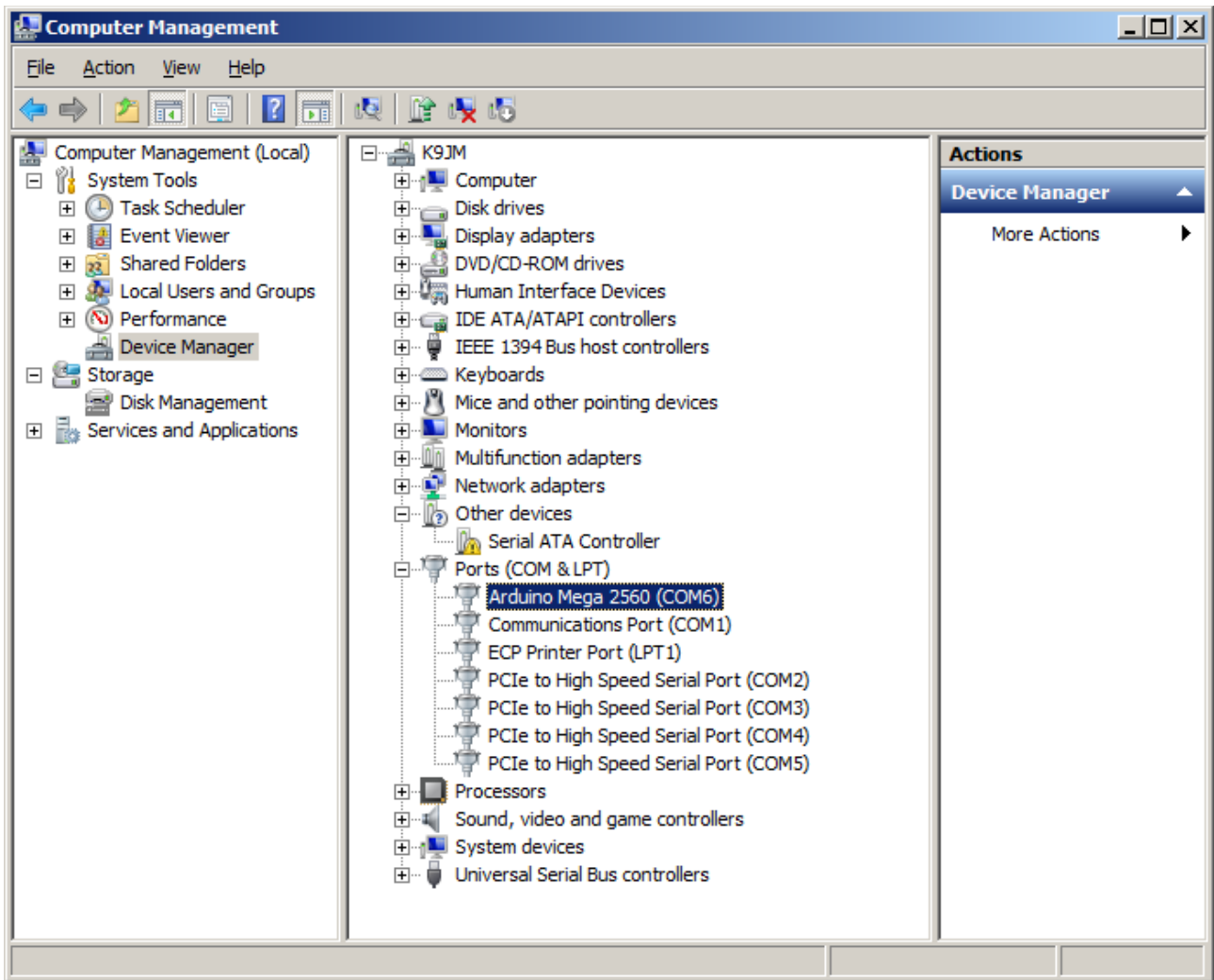
and obtain the latest Arduino released software. It must be version 1.0 or greater. The only thing that will be required is the drivers, but you will have to download everything. If you wish to modify the source code, you will need the full package. This site has helpful information that details installation on installation of drivers. Follow these instructions.

<http://arduino.cc/en/Guide/Windows>

I usually download the zip version. Then move (drag and drop) the arduino-1.X.X folder from the zip file to your desk top. Where X.X is the current version number. Then when loading the driver for the unknown device, point it
... Desktop/arduino-1.X.X/drivers and hit okay.

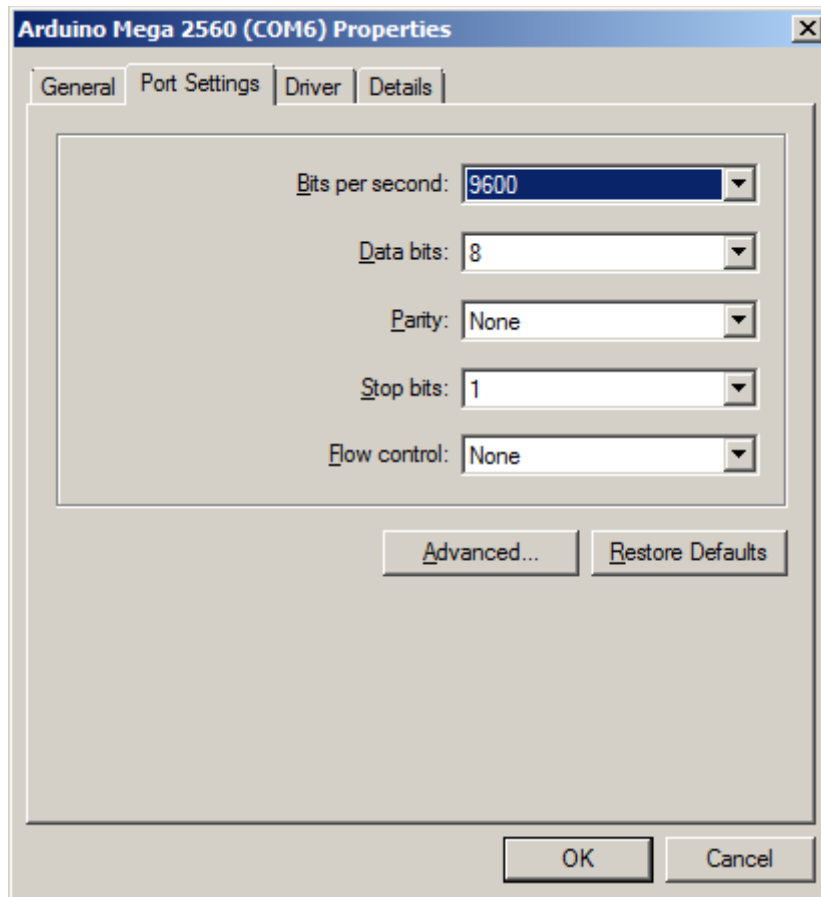
The Arduino board can be powered off the USB port, so no external power supply is required.

While installing the driver some versions of windows will warn you that the driver is not verified or certified by Microsoft. This is normal, do not be alarmed, just acknowledge the "warning".

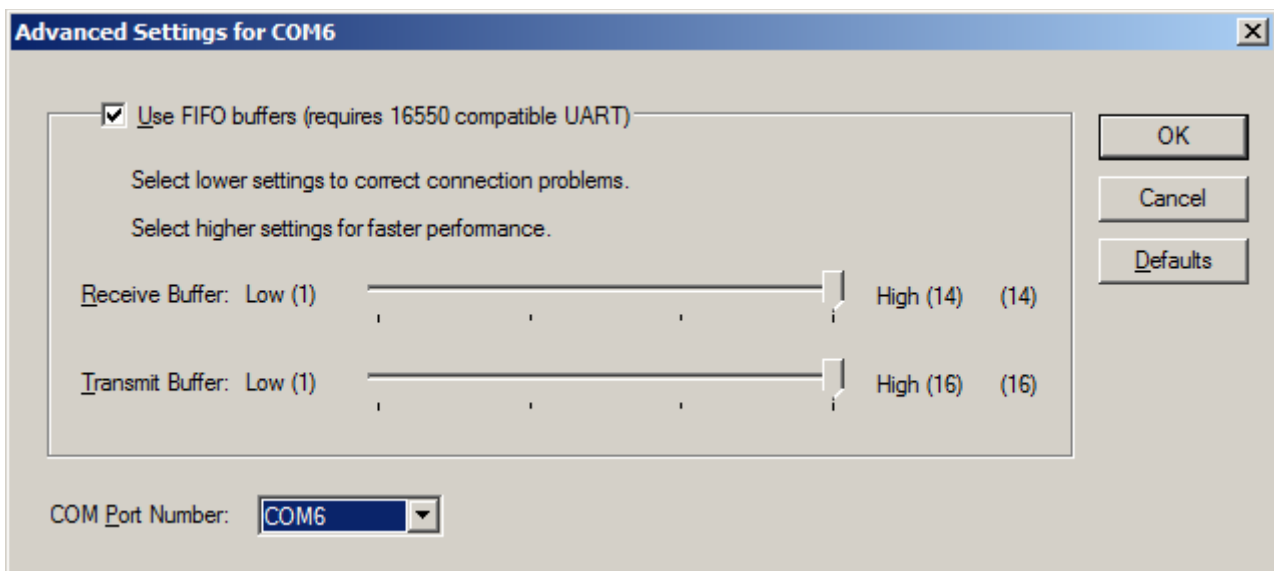


Note: If you have a Rev3 board properly installed, on the above "Computer Management" screen will read "Arduino Mega 2560 R3 (COM#)"

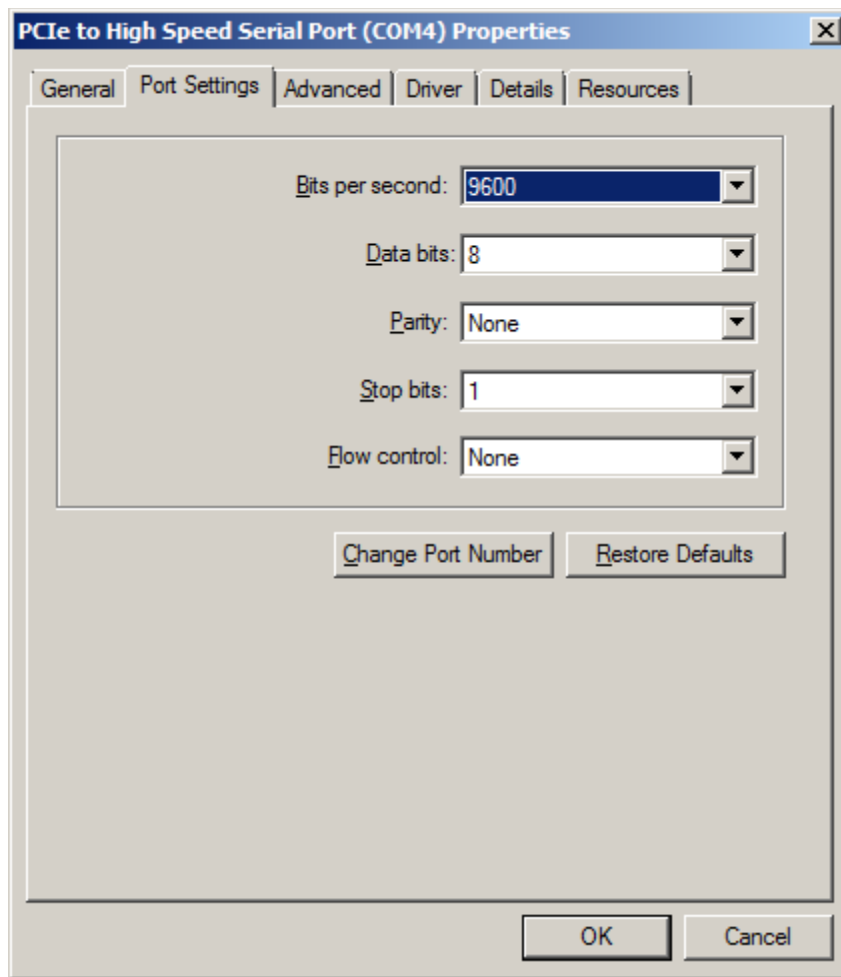
If you are running Windows, and if the Arduino is connected to the PC, it should be visible in your computers "Computer Management" screen. Please note which COM port was assigned to Arduino Board. If this port is too high or if you wish to change the COM port assignment, right click on the item (as shown above) and select "Properties" and click on the "Port Settings" tab and click on the "Advanced..." button. The rest of the parameters are the defaults and are always over written by the program.



And select the desired COM Port number in the highlighted box



If the port is marked "IN USE" and it is a "virtual" COM device that is currently not in the machine, select it to take over that device. If you have a physical COM port that you wish to re-assign to another number, thus freeing that COM port on your machine, select the device in the device manager, right click on "Properties" and select the "Port Setting" tab.



Now select the Change Port Number button. The rest of the parameters are the defaults and are always over written by the program.

Using this technique one can organize the COM port number on the computer to hopefully make sense and to work will all desired programs.

NOTE: REMEMBER THE COM PORT NUMBER ASSIGNED TO THE ARDUINO MEGA 2560 BOARD

There are many YouTube.com videos that detail step by step how to install drivers for the Arduino that may be useful.

STEP TWO: Uploading CI-V Router software

If you have a complete unit, software was installed before shipping, skip this step. If you ever wish to install the latest software, for any reason, follow this procedure. To get the latest router software go and download

http://www.k9jm.com/CI_V_Router/download.html

On this page you will find release notes and dates so you can see what new features or bugs were fixed since your software version.

Unzip the "prebuilt" file into a directory. In the directory there should be avrdude, avrdude.conf a .hex file and a batch file upload.bat

With the Arduino connected to the computer and remembering the COM Port number from above, open a Command Prompt window, navigate to this directory and run the following command

upload #

Where the # is the COM Port number for the Arduino Mega board that you hopefully remembered from the first step.

In about five seconds the task should be complete. Below is a "typical output". The name and the size of the .hex file will be different, but eventually it should say the flash was verified and tell you Thank you.

Note: When the software installs on a virgin Arduino board, it will self configure to operate at 38000 baud for the computer and 9600 for the CI-V bus.

Typical output

```
C:\Users\James\DLTest>avrdude.exe -Cavrdude.conf -pm2560 -cwiring -P\\.\COM9
-b115200 -D -U flash:w:K9JMBasicRouter.hex:i

avrdude.exe: AVR device initialized and ready to accept instructions

Reading | ##### | 100% 0.04s

avrdude.exe: Device signature = 0x1e9801
avrdude.exe: reading input file "K9JMBasicRouter.hex"
avrdude.exe: writing flash (13500 bytes):

Writing | ##### | 100% 2.27s

avrdude.exe: 13500 bytes of flash written
avrdude.exe: verifying flash memory against K9JMBasicRouter.hex:
avrdude.exe: load data flash data from input file K9JMBasicRouter.hex:
avrdude.exe: input file K9JMBasicRouter.hex contains 13500 bytes
avrdude.exe: reading on-chip flash data:

Reading | ##### | 100% 1.79s

avrdude.exe: verifying ...
avrdude.exe: 13500 bytes of flash verified

avrdude.exe: safemode: Fuses OK

avrdude.exe done. Thank you.

C:\Users\James\DLTest>
```

Alternatively, you can download the source files, place the library files in the library and open the sketch and build the application. To learn how to do this read up on the Arduino site.

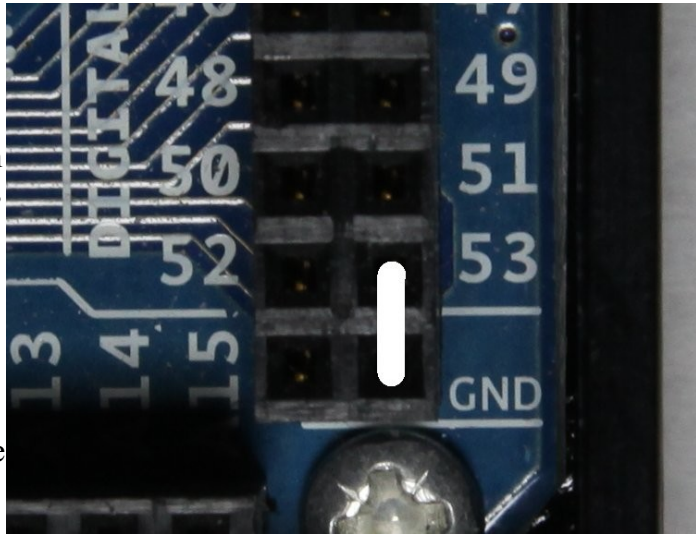
If you do not wish to configure the router, re-attach the CI-V "shield" on the Arduino board.

STEP THREE: Configuring the CI-V Router

NOTE: When touching the Arduino and CI-V router electronics be sure to employ anti-static procedures.

On a virgin Arduino board or any completed system shipped, the configuration will be in the default state. The baud rate for the CI-V ports is 9600 and 38400 for the USB 'computer'. To confirm or change these parameters, the following procedure can be followed.

Configuring the CI-V Router is done by restarting or resetting the Arduino Mega board with Pin 53 connected to ground. At start time, it checks to see if pin 53 is grounded. If it is, a small program is run within the router where the user interacts with a serial terminal program and it permits the user to configure the EEPROM that is internal to the Atmel microprocessor. Parameters can be changed at will at any time using this method. What can be established is the baud rates for the CI-V bus as well as the baud rate for the computer interface, and the "transceive" function. Described later. To operate as a router, the board must be restarted with pin 51 NOT grounded, leaving it unconnected is fine. The board may be restarted by removing all power from the unit, including USB, or by hitting the 'reset' button on the back center of the Arduino Mega board.



Illu

stration 1: Jumper pin 53 to ground

Note: The full unit ships with a jumper assembly that is plugged between the two ground pins. To jumper pin 53 to ground, simply unplug the jumper and rotate it 90 degrees, so that it shorts pin 53 to ground. When done, be sure to store the jumper in the same location as it was shipped.

Resetting or starting the Arduino with pin 53 connected to ground will run the configuration program. This program changes the content of an EEPROM and it saves the changes after each entry has been made.

If you already have and know how to use your favorite serial terminal program, use it. If you do not have a favorite serial terminal program, might I suggest PuTTY.

There is a version of PuTTY that runs on almost every operating system. It is free and very useful and can be downloaded from:

<http://www.chiark.greenend.org.uk/~sgtatham/putty/download.html>

There are many options here, for windows it is best use the "Windows installer for everything except PuTTYtel" option.

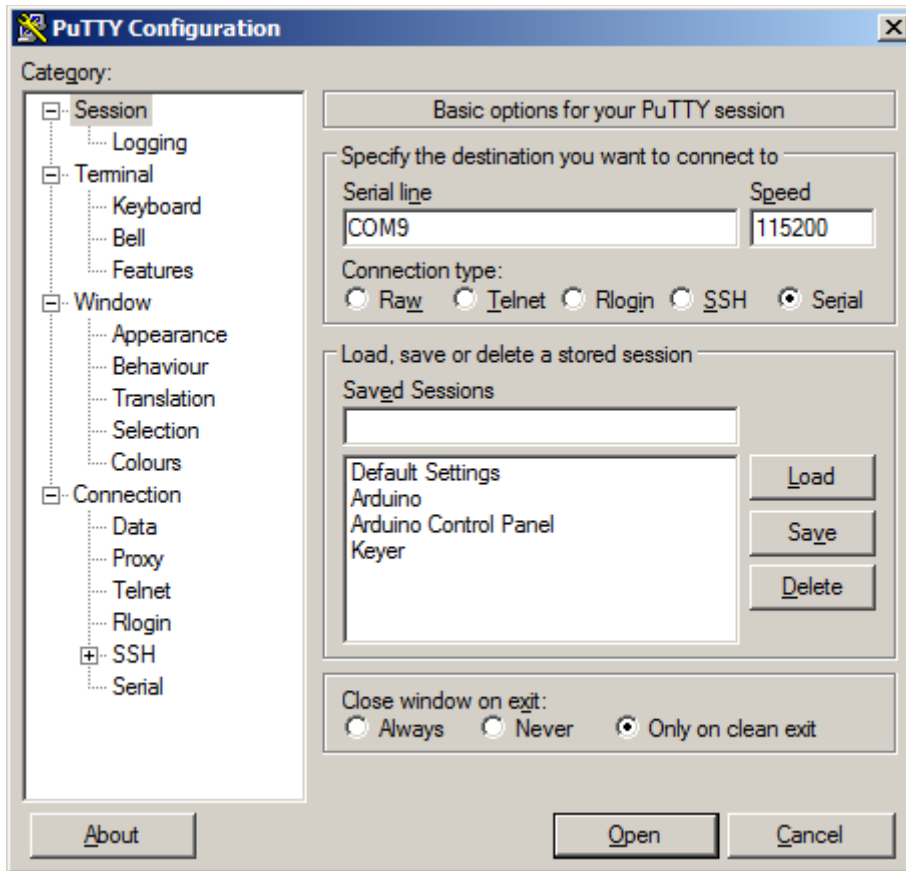
You will want to configure the serial program for a baud rate of 115200 8 bits 2 stop no parity no flow control.

In PuTTY select the 'Serial' radio button, the COM port on 'Serial line' and 'Speed' is set to 115200 and hit 'Open'

Note: The Saved Session are saved session on my computer, once you have a

configuration you like, give it a name in the "Save Session" line and hit save.

NOTE: This configuration program ALWAYS runs at 115200 baud rate regardless of the settings configured.



Pressing the reset button on the Arduino will bring up the following:

Note: These settings do not represent the default setting as shipped. The first line will tell you the version and date of the current CI-V router software. The second line tells the amount of free static RAM available for the program to use. The board has 8K bytes.

At this point the user can input either 1 through 13 followed by "ENTER".

Selecting either 1 or 2 brings up a second 'baud rate setting' menu, where the user can select the desired baud rate. Or if 3 through 6 is selected the boolean can be toggled between True and False by selecting the parameter.

Transceive, default is true, is discussed later. It is best to leave at true for single radio operation.

USB Echo, default is true, and it causes any command sent from the computer to the USB port to be echoed back. This is required for the program DX4WIN, and perhaps others. It does, slightly slow down polling in other programs.

Subswitch, default is true, has the router running in a passive mode, where everything is routed.

However, when the PC controlling software switches to the sub VFO to check what frequency it is on, then everything else (PW-1, antenna switches etc) will follow. If Subswitch is off, the reported frequency will remain with the "main" VFO when the PC software commands a switch to the sub VFO. This eliminates many unnecessary jumps, and it further supports SO2V operation, however it does not support cross band split operation. This is an attempt to "fix" a short coming in the Icom control interface. Try turning it off and see if you like the result.

Note: Free memory number shows the amount of unused RAM in bytes in the Atmel processor. This number will vary with different releases of software. There is 8 * 1024 bytes of RAM available.

The computer baud rate is the baud rate at which the CI-V Router communicates with the host computer via the USB. The value should be the highest baud rate supported by all of your PC logging and contest programs. The default is 38400, which is supported by many programs.

The baud rate for the CI-V bus is the baud rate for each of the three CI-V ports. If using a Icom PW-1 amplifier Icom recommends a baud rate of 9600. If your radio support "auto", baud rate, do not run operate the radio in the "auto" mode, specify the baud rate.

```
Config CI-V Router
1 -Computer baud rate = 38400
2 -CI-V baud rate = 9600
3 -Transceive msg to other radios = True
4 -Transceive msg to USB = True
5 -USB Echo = True
6 -Subswitch = True
7 -Split OFF when QSY >1MHz = False
8 -Enable driver power level = False
9 -Enable driver power level learn = False
10-Small power table = False
11-Driver power table
12-Icom radio CI-V address 0x64 hex
13-Reset all to default values
Which parameter to change? 1
1
Select baud rate:
1- 300
2- 1200
3- 2400
4- 4800
5- 9600
6- 14400
7- 19200
8- 28800
9- 38400
10- 57600
11- 115200
Which baud rate 1..11? 10
```

```
Config CI-V Router
1 -Computer baud rate = 57600
2 -CI-V baud rate = 9600
3 -Transceive msg to other radios = True
4 -Transceive msg to USB = True
5 -USB Echo = True
6 -Subswitch = True
7 -Split OFF when QSY >1MHz = False
8 -Enable driver power level = False
9 -Enable driver power level learn = False
```

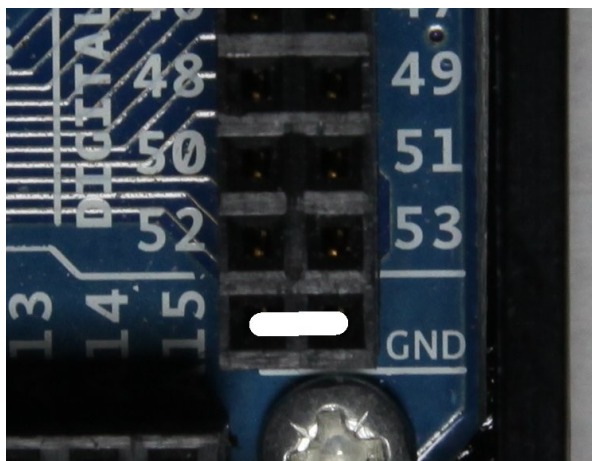
```

10-Small power table = False
11-Driver power table
12-Icom radio CI-V address 0x64 hex
13-Reset all to default values
Which parameter to change? 2
2
Select baud rate:
 1- 300
 2- 1200
 3- 2400
 4- 4800
 5- 9600
 6- 14400
 7- 19200
 8- 28800
 9- 38400
10- 57600
11- 115200
Which baud rate 1..11? 7

Config CI-V Router
1 -Computer baud rate = 57600
2 -CI-V baud rate = 19200
3 -Transceive msg to other radios = True
4 -Transceive msg to USB = True
5 -USB Echo = True
6 -Subswitch = True
7 -Split OFF when QSY >1MHz = False
8 -Enable driver power level = False
9 -Enable driver power level learn = False
10-Small power table = False
11-Driver power table
12-Icom radio CI-V address 0x64 hex
13-Reset all to default values
Which parameter to change?

```

For more information about the configuration options, see the section on configuration options later in this user guide.



Remember to remove the jumper from Pin 53 and to reseat the CI-V "shield" on the Arduino. The two pins just below pin 52 and 53 on the Arduino board are ground. This is a handy place to store the jumper when not configuring the router.

STEP FOUR: Configure your ICOM Radios

Consult your ICOM radio manual to discover how to configure the CI-V settings. Most ICOM radios have three setting for the CI-V bus:

1. Baud Rate
2. Address
3. Transceive
4. CI-V with IC-731

Make sure the baud rate matches the baud rate as configured for the CI-V router. Recommend 9600 baud. Note the address. If there is more than one radio, make sure the addresses are different. The address will be required when configuring PC client software.

Lastly, Transceive, should be ON.

Note: DO NOT SET THE RADIO BAUD RATE TO AUTO!

Note: The K9JM Router does not support the IC-731 CI-V frequency syntax. Many Icom radios provide the option to operate "transceive" with the IC-731. This radio uses 4 bytes of frequency data, as compared to the standard 5 bytes of frequency data. If your radio has a setting, that is anything like "CI-V with IC-731", make sure this feature is turned off.

If you had to change any of these setting, you may need to re-sync your PW-1 with the radio.

STEP FIVE: Configure your PC Host Software

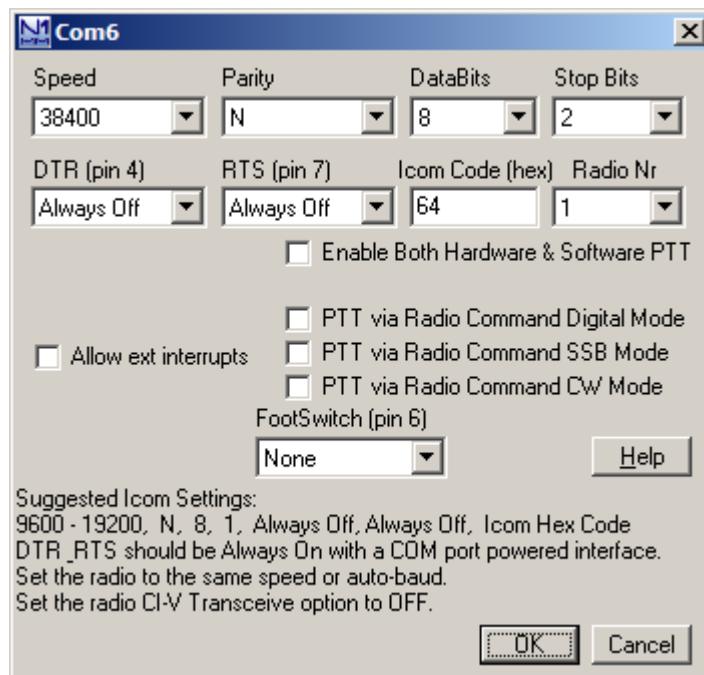
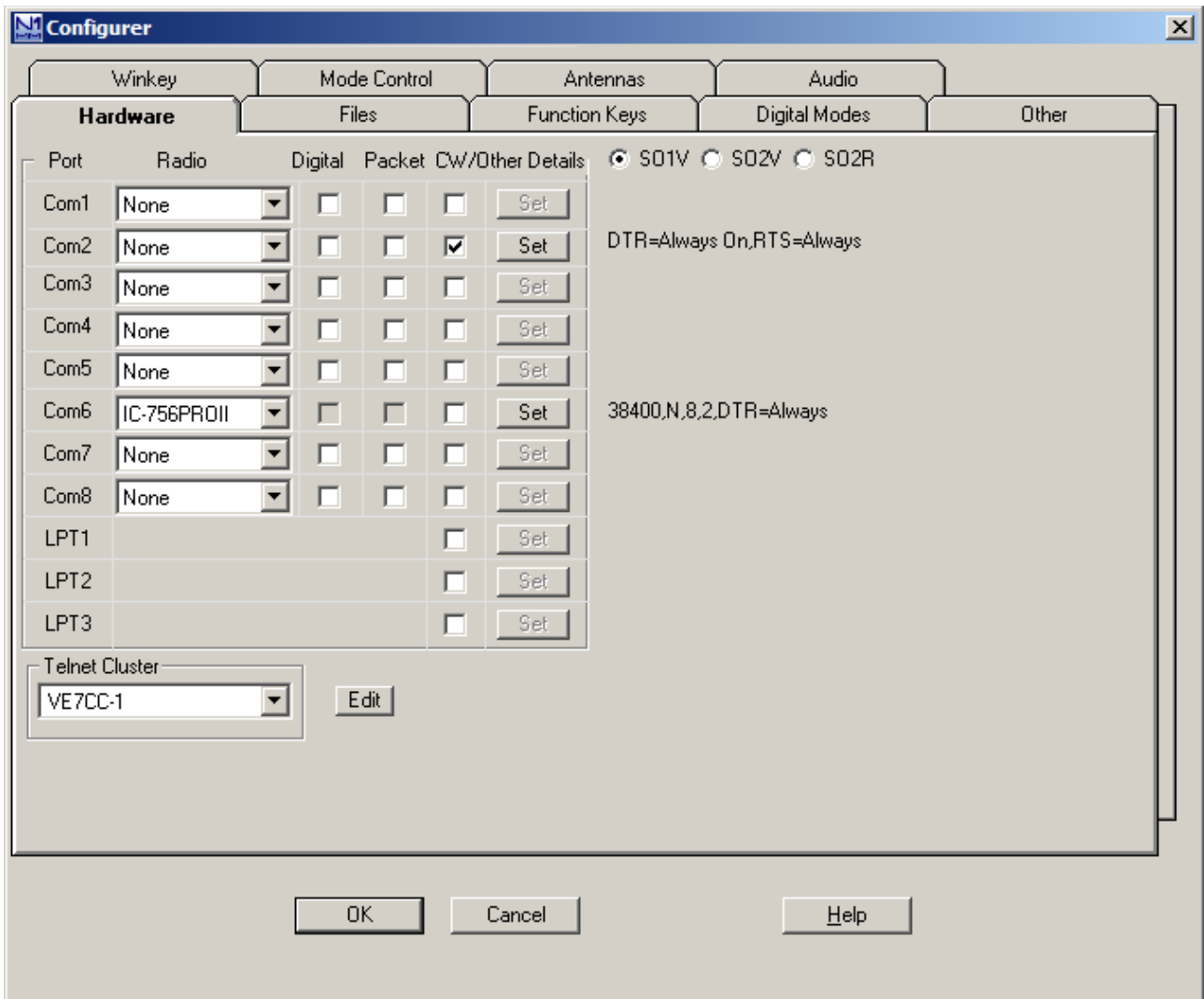
Unfortunately, there are nearly an infinite number of programs that run on the PC that can control the CI-V bus. Fundamentally, the goal is to configure with the following parameters:

1. Baud Rate = Computer baud rate as configured on the CI-V router
2. RTS and DTR = OFF
3. Icom Address / Radio Type = Radio Configuration
4. If required, number of stop bits = 2, No Parity, No Flow Control

The Arduino board will reset whenever DTR is brought high. This is how the PC signals the Arduino for a software download. If the DTR line can not be controlled, this can be defeated by pulling up the Arduino "RESET" line with a 120 ohm resistor. This can be done easily by putting a resistor between "5V" and "RESET" on the "POWER" pin head. If used the resistor **MUST** be removed if a software upgrade is to be performed.

N1MM (Classic) Configuration:

N1MM configuration is done much like normal, except make sure the baud rate is set correctly and that RTS and DTR are set to "Always OFF". N1MM does not require the pull up resistor on the Arduino "RESET" line.



Make sure the Icom Code matches the Address of your radio. PTT commands can be used over this interface, if supported by your radio.

In the manual and the screen shot above, N1MM states that Transceive should be set off in the radio.

http://n1mm.hamdocs.com/tiki-index.php?page=Supported+Radios#General_Icom_Information_all_Icom_owners_please_read_

The N1MM manual states that users shall " "CI-V Transceive" to OFF - If CI-V is set to ON, the Bandmaps will not update as the VFO is turned.

This statement is true. If N1MM gets "Transceive" messages, it really slows down the band map.

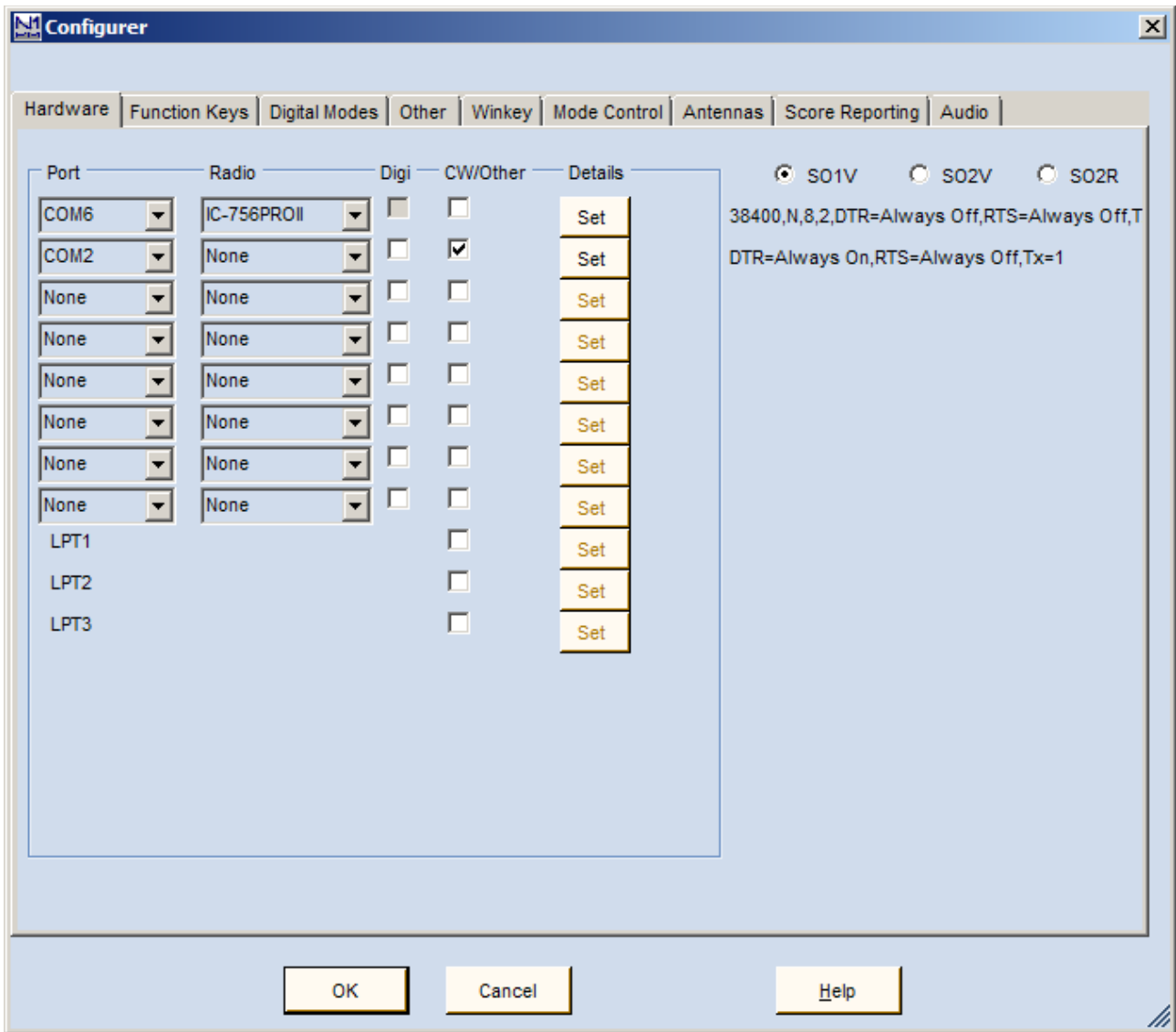
DO NOT TURN TRANSCEIVE OFF IN THE RADIO.

To fix this problem, it is advised to leave "Transceive" on in the radio, but turn off "Transceive msg to USB" in the router configuration.

N1MM + Configuration:

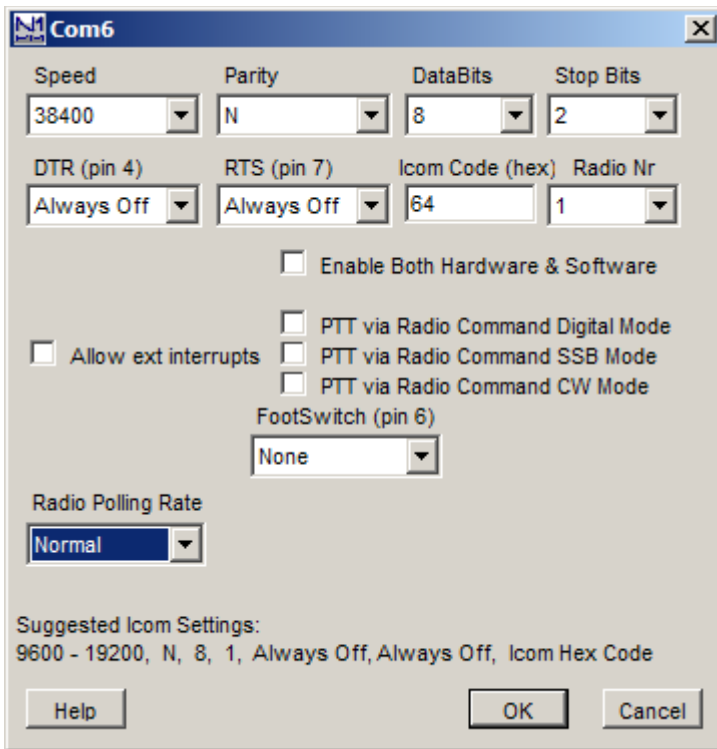
N1MM+ is nearly the same as N1MM. The new version does not restrict COM ports from COM1 through 8.

As with the classic N1MM keep "transceive" messages on in the radio, and if you wish turn it off in the configuration.



Set the proper COM Port and radio type in the "Configurer" window, the click on "Set" for the details.

Again DTR and RTS should be off, 8 bit, 2 stop bit. Make sure the Icom code matches the code for the radio which is to be controlled.



Writelog Version 10.70 and above:

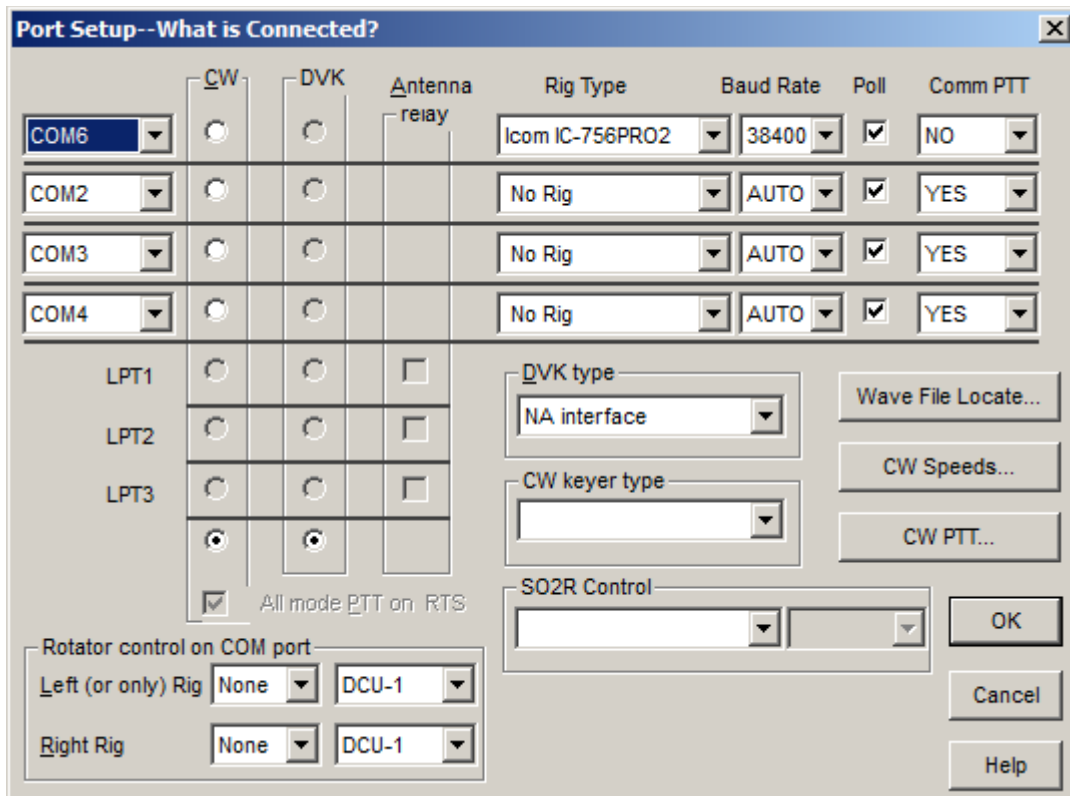
First, I would like to thank the fine folks at WriteLog for loaning me a temporary copy for testing. Versions of Writelog before 10.70 have not been tested. WriteLog does not require the resistor pull up on the "RESET" line. DTR and RTS must be turned off in the writelog.ini file, typically located in the Windows directory with the following addition:

```
[Rigs]
COM6_RTS_INIT=0
COM6_DTR_INIT=0
```

The number following "COM" should match the COM port number of the CI-V Router.

For Windows 7 and Windows VISTA WriteLog must be started as "Run as administrator" so the program will be able to read and modify the writelog.ini file.

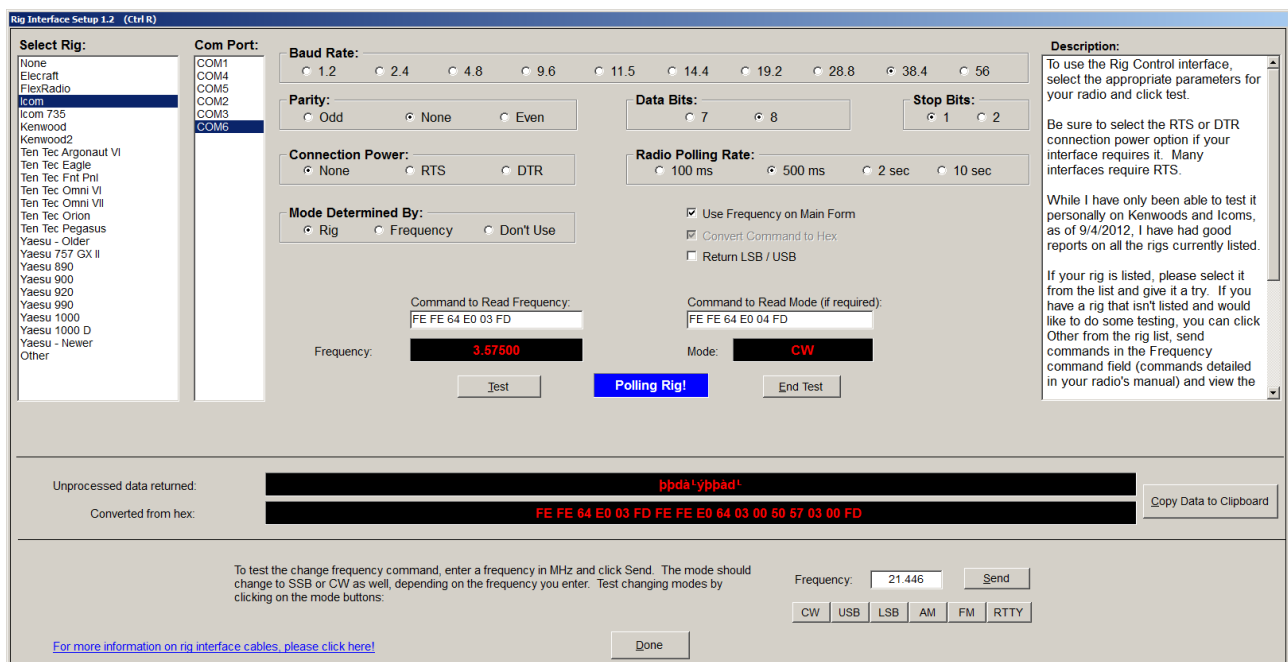
Then run the program and on the menu select "Setup" and "Ports.." and the following window will appear. Again configure the baud rate to match the CI-V computer baud rate and again select the COM port to match the port of the CI-V Router. All other settings can be configured as desired. More information on .ini file settings and configurations are available in the WriteLog manual.



When finished, remember on the menu select, "Setup" and "Save Configuration..."

N3FJP Software

N3FJP programs does not require a pull up resistor on the Arduino "RESET" line. Start N3FJP Contact Log version 4.2 and select "Settings" on the Menu, then select "Rig Interface". N3FJP uses fairly generic control for Icom, with most modern radios being covered by the 'Icom' entry for 'Select Rig'.



Again select the COM port and baud rate for the computer port of the CI-V router. Select the proper baud rate, 8 bits, no parity, 2 stop bits, connection power = NONE, and any polling rate.

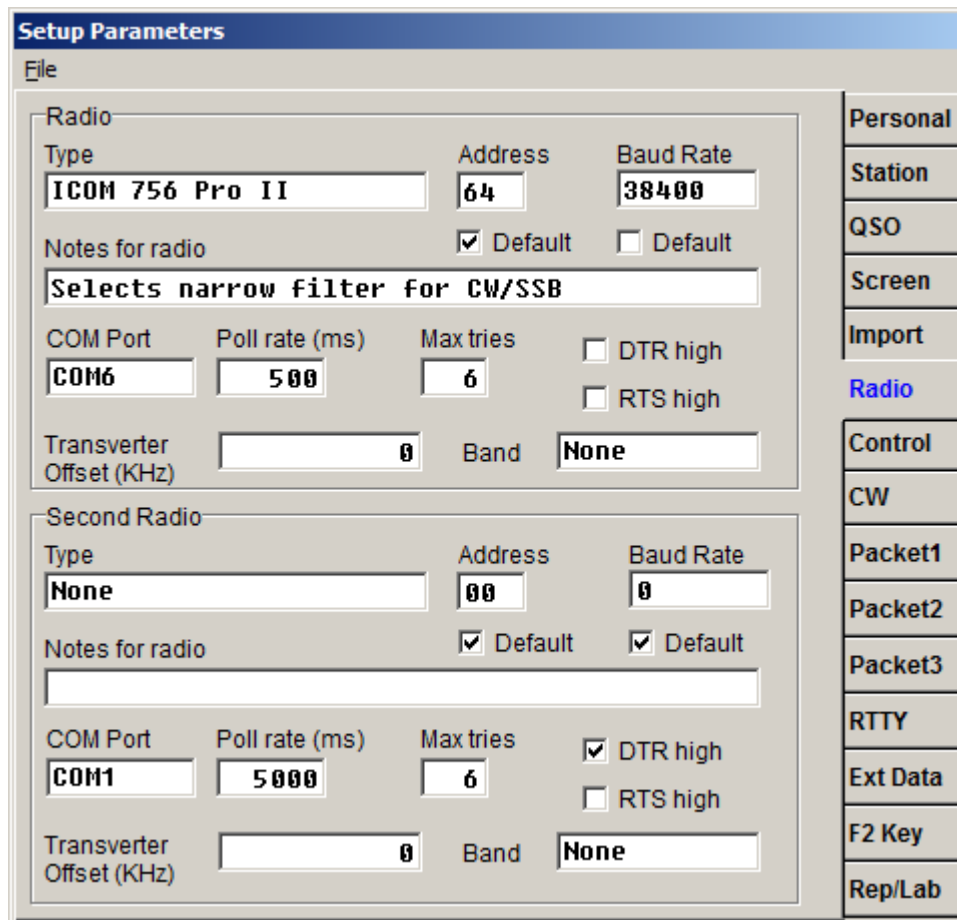
Hit the 'Test' button to see if it works. Test mode change and frequency change with the lower buttons.

Once you see things working, hit the 'Done' button and you're good to go

DX4WIN

To use DX4Win you must use CI-V router software version 1.02 or higher. These tests were done with version 8.05 of DX4WIN. There is no need for a resistor to pull up the reset line.

In the main menu go to "File" and select "Preferences". Click on the "Radio" tab.

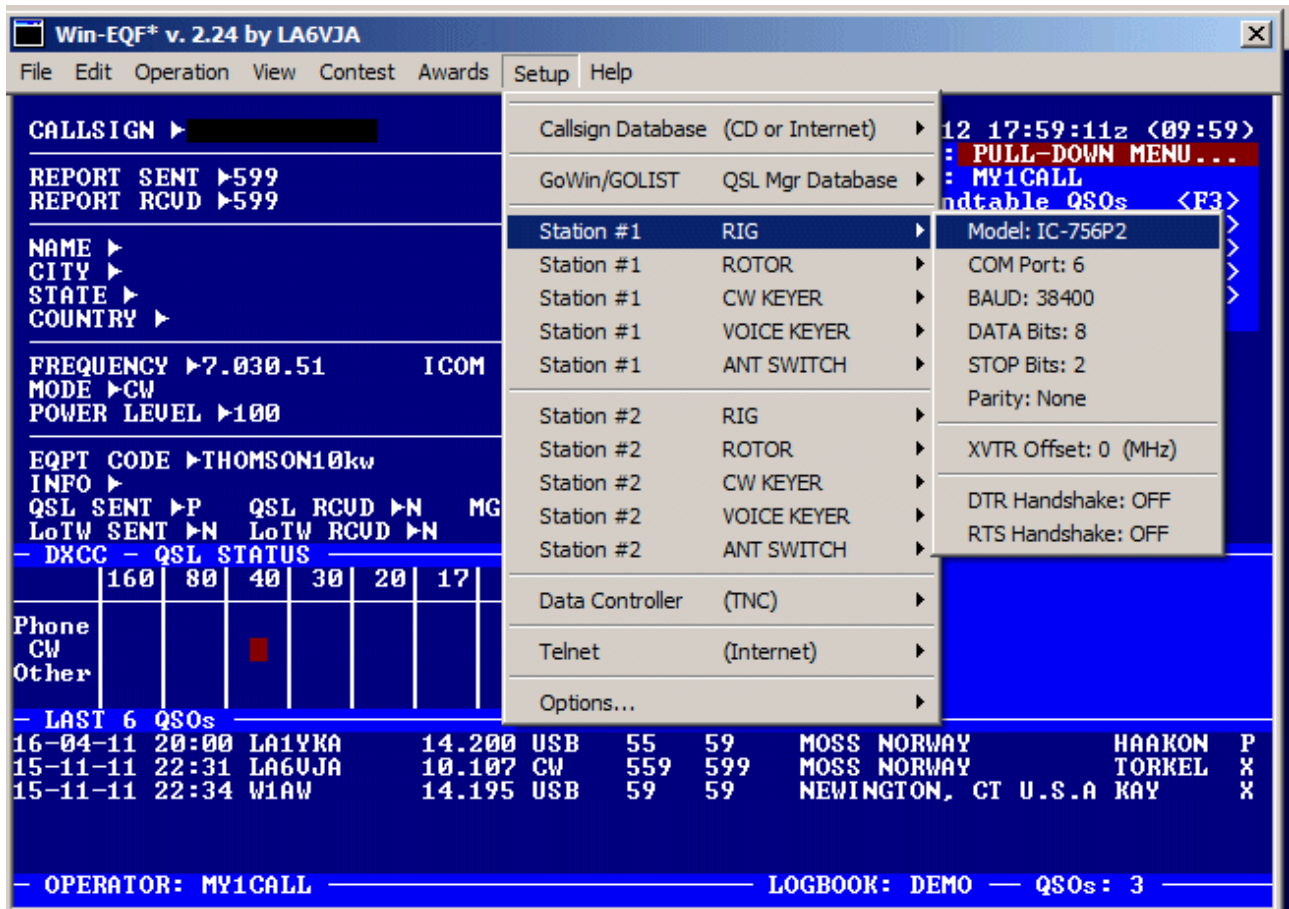


Be sure to uncheck the 'DTR high' and 'RTS high' lines. The baud rate is not the default, so uncheck the 'Default' and enter the router computer baud rate. Make sure the correct COM port is present. Polling rate can be most anything reasonable.

I would like to thank Sam W4PK for his assistance with DX4WIN.

Win-EQF

Again, turn DTR and RTS off, 8 bits, no parity, 2 stop bits.



OmniRig

OmniRig is not a program, it is an interface that programs can use to interface to a radio. This is more complicated than the average program, so there is a special OmniRig users manual available at the K9JM web site:

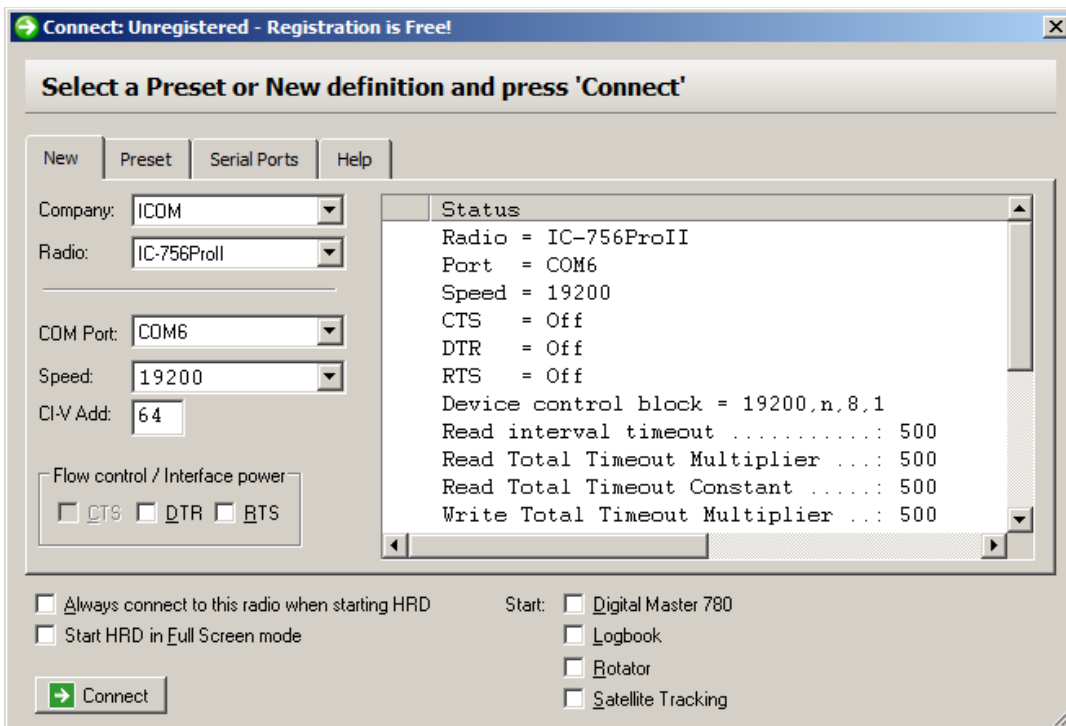
http://www.k9jm.com/CIV_Router/OmniRig.pdf

Ham Radio Deluxe

VERY IMPORTANT: For versions of Ham Radio Deluxe less than version 6.2, the max baud rate is 19200. If you plan to use this program, the computer port on the CI-V Router configuration must be set to 19200 or below, and all other PC programs must be set to this baud rate.

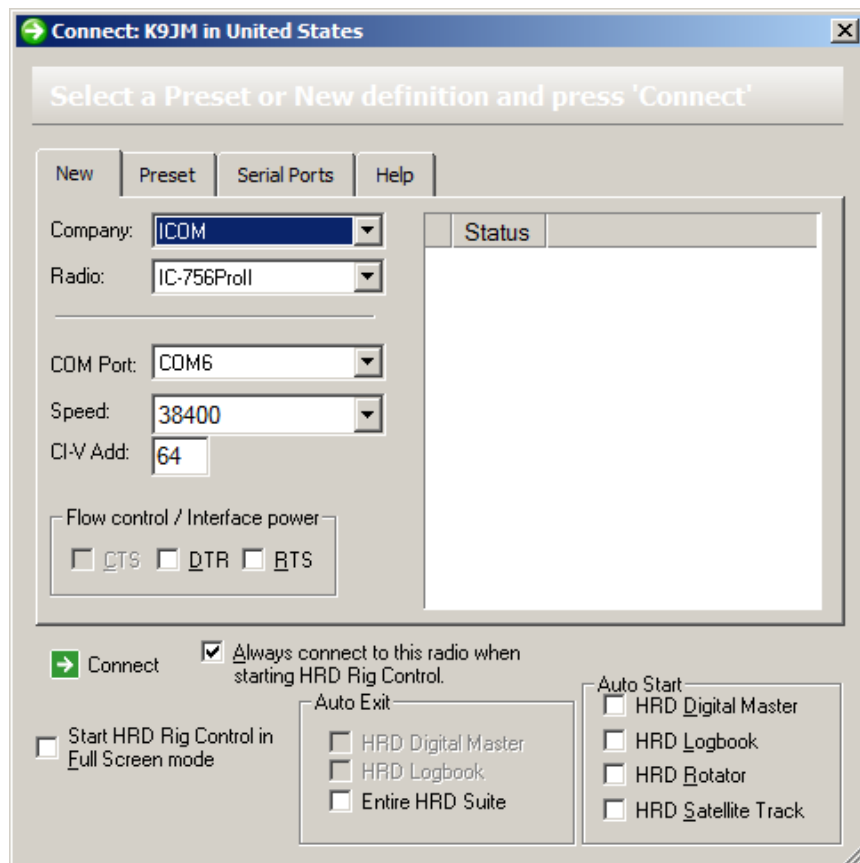
In the router configuration USB Echo must be set true.

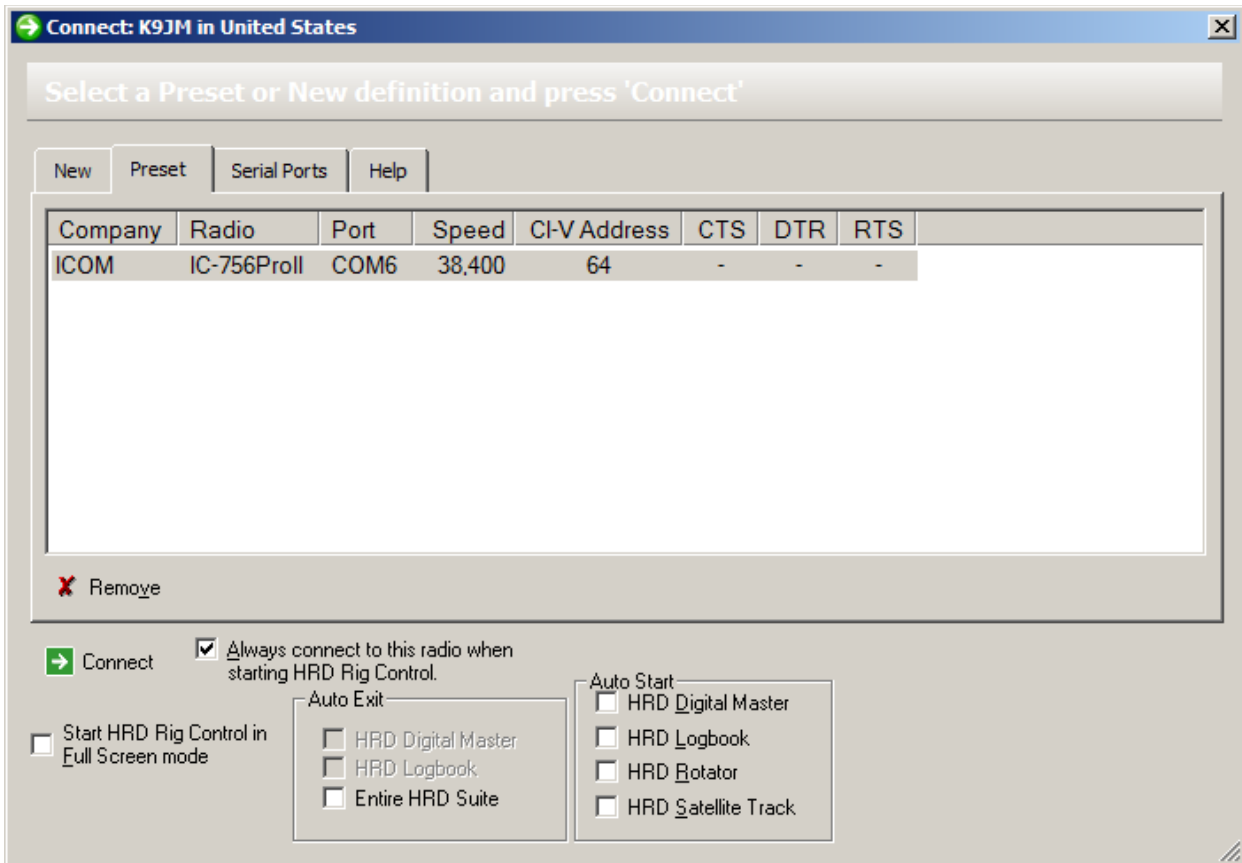
Again, uncheck DTR and RTS. There is no need for the 120 ohm reset pull up for this program.



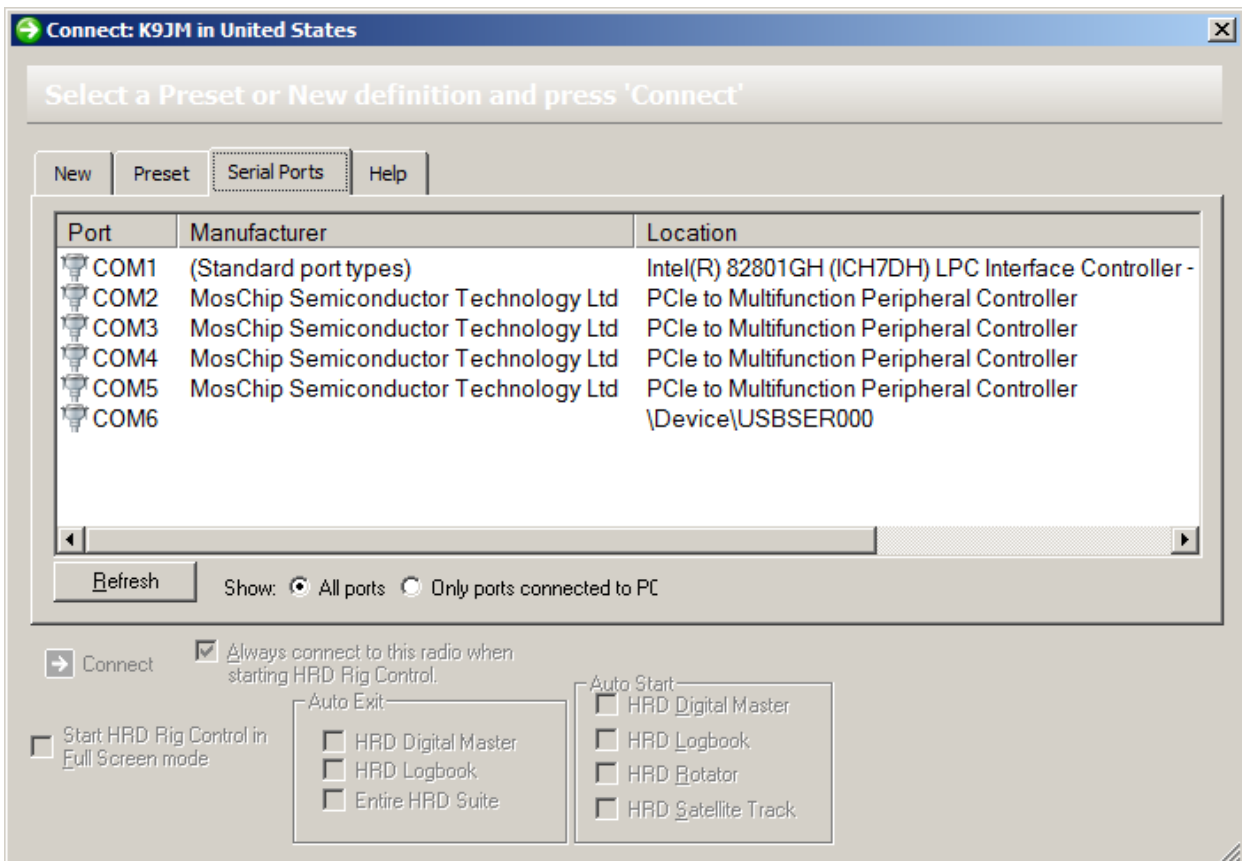
At the 2014 Visalia DX Convention I sat down and talked with the developer of HRD. I talked him into changing the program to support the K9JM Router. I also bought a copy of the program. Starting with version 6.2 released in mid May 2014, the program now supports 38,400 baud. Having used the program at 19200, and at 38,400, the difference is noticeable. In the upper left corner, click on the Connect green arrow.

Ham Radio Deluxe Version 6.2 and greater.



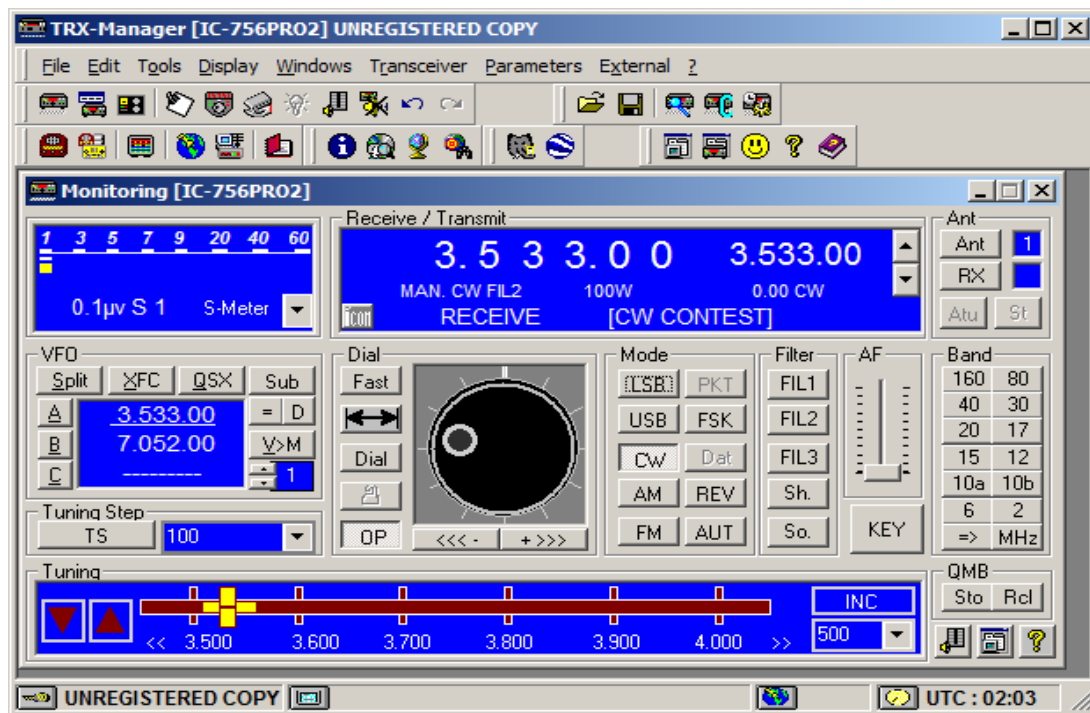


Make sure there is only one radio on a COM port. See Above.
 This is how the Arduino appears in the serial port window as COM6. See Below:

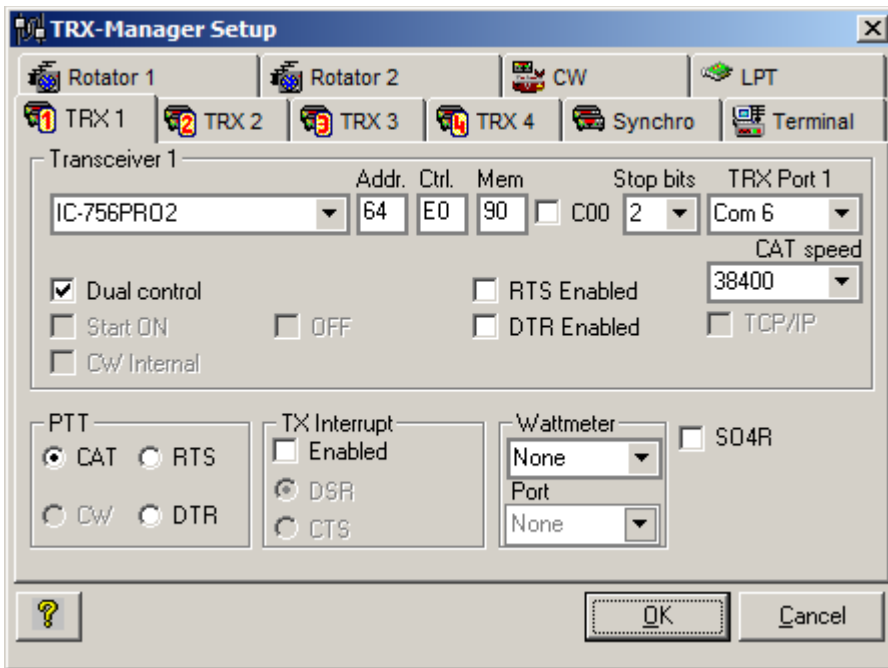


TRX Manager

I know very little about TRX Manager, but I did download and install the "Demo" version 4.6.5



Set up is had by going to the Menu item Parameters and selecting "SetUp"



RTS and DTR Enabled boxes MUST BE UNCHECKED! CAT speed must be set to the same speed as the router Computer baud rate. TRX Port must be set to the COM port for the CI-V router. TRX-Manager supports only COM 1 through 15, odd for a program that supports so many devices.

The Dual control, when checked causes TRX Manager to query the radio for many parameters, when unchecked, it just listens to 'broadcast' messages from the radio.

Control must be between E0 and EF Hex, the default of E0 is fine.

The CI-V Router USB Echo can be either on or off.

All other settings can be done per the manual, or user's discretion.

With TRX-Manager with "Dual Control" selected, it is best to run the CI-V baud rate and the Computer baud rate as high as possible for best responsiveness.

TRX-Manager supports four transceivers, make sure you are setting up and observing the same transceiver. Also make sure you reset the application after making ANY changes.

It is advised to run CI-V firmware 1.05 or greater with TRX-Manager.

LOGic9

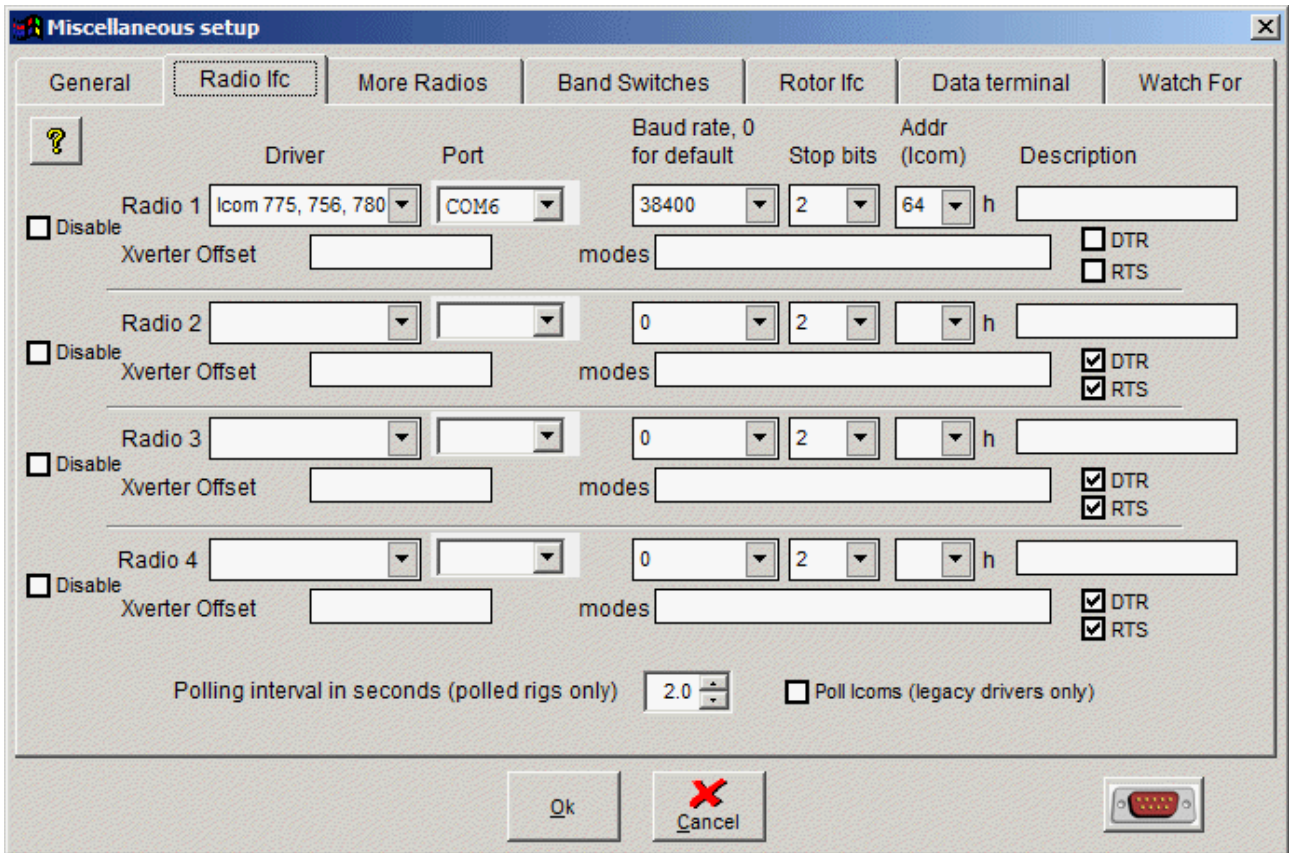
I am not an expert on LOGic9, but I did go to their website and downloaded the "Demo" version of the program.

<http://www.hosenose.com/LOGic/default.aspx>

It is important to note that following configuration parameters must be set to TRUE for proper operation with LOGic9:

Configuration is done by selecting on the menu, "Tools", then "Setup" and then "Misc ham setup,

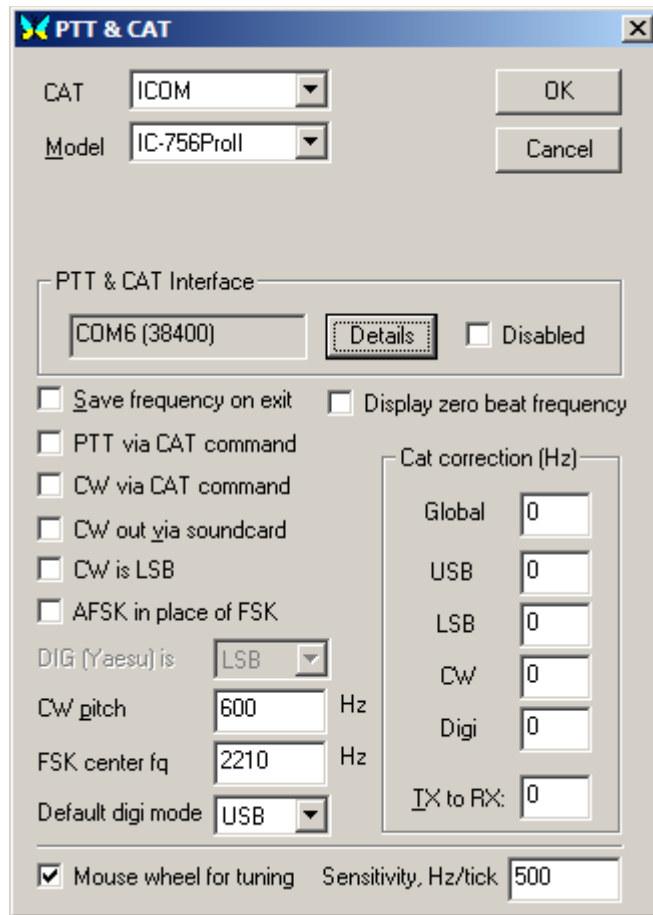
rig, TNC..." The window below comes up and select the "Radio lfc" tab. Shown below is a screen shot as configured for my 756Pro2. Note that DTR and RTS must be unchecked. Poll Icoms can be checked or not, operators choice.



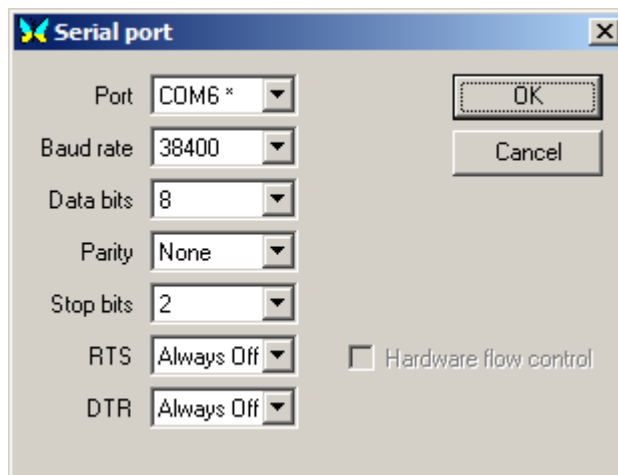
MixW

I am not an expert with MixW. This program is a digital mode and logging program with many features. I worked with version 2.20f demo version, and received help from Pat KG4URP. For configuration, I would recommend the following

as well as using version 1.09 or greater CI-V Router software. Set up is fairly straight forward. On the menu, select 'Configure' then TRCVR CAT/PTT



Select the proper ICOM model, set your favorite defaults, then hit 'Details' button.



Again in my configuration, the CI-V router is on COM6. Again two stops bits and RTS and DTR are always off. You should be off and running.

STEP SIX: Configure (sync) the PW-1 Amplifier (required if used with PW-1)

First and foremost, to sync the PW-1 with your radio with the router *not activated*. Leave the cables connected, but make sure no power is applied to the router.

The PW-1 owner's manual describes synchronization with a radio and with multiple radios. This

description leaves much to be desired. There are many good resources on the net.

<http://www.qsl.net/icom/pw1/pw1pro2.html>

These are the fundamentals:

There are two connections between the ICOM radio and a transceiver, the accessory cable and the remote cable (which provides the CI-V bus).

First, while there are two CI-V connections on the back of the PW-1, there is only one CI-V bus. The two connectors on the back of the PW-1 are wired together. The CI-V connection to the radio can be made to either jack.

Second, is the accessory connector that brings 12 volts, transmit and ALC information from the exciter to the PW-1. There is a switch on the back of the PW-1 that selects between one or two transceivers. In the one transceiver mode, it wires the accessory connections of the two radios together. On the PW-1 there is a front panel means of selecting which of the two transceivers is selected. If the switch is in the two transceiver mode, the amplifier will take the accessory information from the correct connector and will respond to the correct baud rate and radio "ID" with the transceiver that it is synced up.

The synchronization process is one whereby the PW-1 is driven into a state where it listens to the CI-V bus and does an auto baud rate detection and radio "ID" identification. Once the PW-1 has learned this data, it should never have to re-learn, unless the PW-1 microprocessor is "reset" by holding down the up and down buttons while turning on the unit.

So that the PW-1 can quickly follow band changes of the transceiver, the transceiver(s) must be run in "transceive" mode. In this mode, whenever the radio dial is moved, or a memory is recalled, or a band change occurs, the radio sends out a 'transceive' broadcast frequency update message.

If there is only one transceiver connected to a PW-1, there are no problems. If there are two transceivers, this is when things get difficult.

If two radios are connected to the bus and are operating at the same baud rate, then both transceivers are running in "transceive" mode. In this configuration, both transceivers will tune in unison. To get around this when running with the PW-1, each radio is typically set to a different baud rate. The PW-1, when doing its synchronization will auto discover the baud rate of each transceiver and when that transceiver is selected through the front panel of the PW-1, the PW-1 will respond only to the 'transceive' broadcast frequency update message.

The CI-V router could direct only the 'transceive' broadcast frequency update messages from the correct transceiver to the PW-1 at the correct baud rate, only if it knew the status of the input switch selector on the PW-1. Unfortunately, CI-V router can not determine nor set the input selector in the PW-1. Since the CI-V router doesn't know the state of input selector, it can not change the baud rate of messages sent to the PW-1 based upon which is the active transceiver. The CI-V router can not change baud rate on a packet by packet basis. What it can do is send broadcast messages from both transceivers to the PW-1 and let it choose which to respond assuming the two transceivers have different ID's. Both transceivers will need to be at the same baud rate. To keep the two transceivers from tracking one another, 'transceive' messages can be suppressed being sent to another radio port, but this only works when the CI-V router is in operation. When the CI-V router is in bypass, both transceivers will track one another.

Sync procedure:

For synchronization the CI-V router does NOT have to be operational. It should be cabled up, but power on the computer and CI-V router should be off.

Make sure all radios are configured to the same baud rate (9600) and CI-V Transceiver is set to "ON".

It is wise to ALWAYS reset the PW-1 microprocessor before beginning the synchronization operation. This will put the PW-1 into a known state, waiting for synchronization. This procedure is on page 11 of the PW-1 manual.

Turn off everything. There should be NO LEDs or lights on within the PW-1.
While holding down the "UP" and "DOWN" buttons at the same time, turn on the power to the PW-1.
The microprocessor is now reset.
Turn off the power to the PW-1.

One radio procedure:

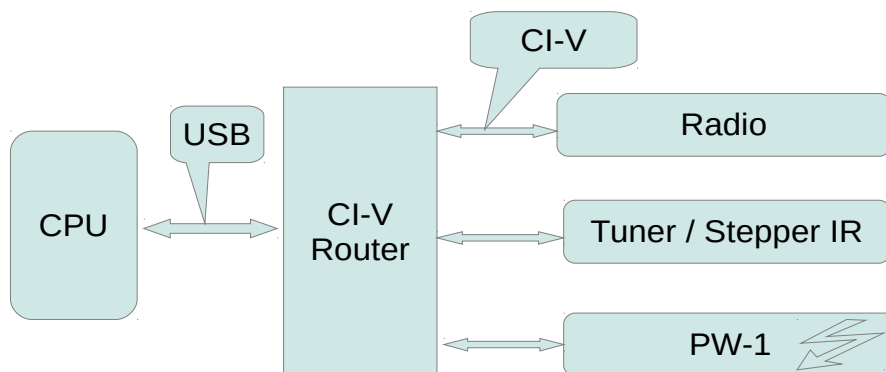
Turn off everything. There should be NO LEDs or lights on within the PW-1.
On the back of the PW-1 make sure the "EXCITER" switch is in the "1" position.
While holding down the "INPUT" buttons turn on the power to the PW-1.
The Input 1 light will now be blinking.
Turn on the transceiver and wait for it to boot.
Turn the frequency knob until the INPUT 1 lamp on the PW-1 stops flashing.
Turn off the PW-1
Turn off the radio
Synchronization is complete.

Turn on the PW-1
Turn on the radio.
The "AUTO" light should be on.... if not hit the "DOWN" button until the "AUTO" light is on. You are now in sync.

Two Icom radio procedure:

Turn off everything. There should be NO LEDs or lights on within the PW-1.
On the back of the PW-1 make sure the "EXCITER" switch is in the "1&2" position.
While holding down the "INPUT" buttons turn on the power to the PW-1.
The Input 1 light will now be blinking.
Push the "DOWN" button on the PW-1. The band indicators 1.8 through 50 should light continuously.
Turn on the transceiver #1 and wait for it to boot.
Turn the frequency knob until the INPUT 1 lamp on the PW-1 stops flashing.
Turn off the transceiver #1
Push the "INPUT" button and INPUT 2 lamp blinks.
Turn on the transceiver #2 and wait for it to boot.
Turn the frequency knob until the INPUT 2 lamp on the PW-1 stops flashing.
Turn off the transceiver #2
Turn off the PW-1
Synchronization is complete.

How does it work



The heart of the CI-V router is an Atmel microprocessor on a Arduino Mega 2560 board. It is a stand alone 16 MIP computer that runs a program that is located in it's internal 256K of flash memory. The key feature of this processor is that it has four hardware serial ports. It is capable of listening to and send to four serial ports at the same time without missing a byte. One of these ports is connected to the USB interface, that is used for communications to a host processor. The other three ports have an interface to the Icom CI-V bus.

The CI-V router is a “store and forward” message router. On the Icom CI-V bus, Icom messages are sent. These messages are typically ten bytes in length and contains a source and destination “ID” that is a byte long. The Icom messages also has a start two byte sequence and an end byte, but it does contain any CRC or check sum that can be used to check the content. The router looks for an icom message at each port. If one is identified, it does a sanity check that is rule based driven from the message type. The router keeps track of which IDs are on each port in a table. The destination address is read off of each incoming message. If the ID is in the destination table, the router will direct the message to that port. If the destination ID is not in the table, the message is forwarded to all ports other than the one that it arrived on.

Note: If an Icom device is moved from one port to another, resetting the router is required.

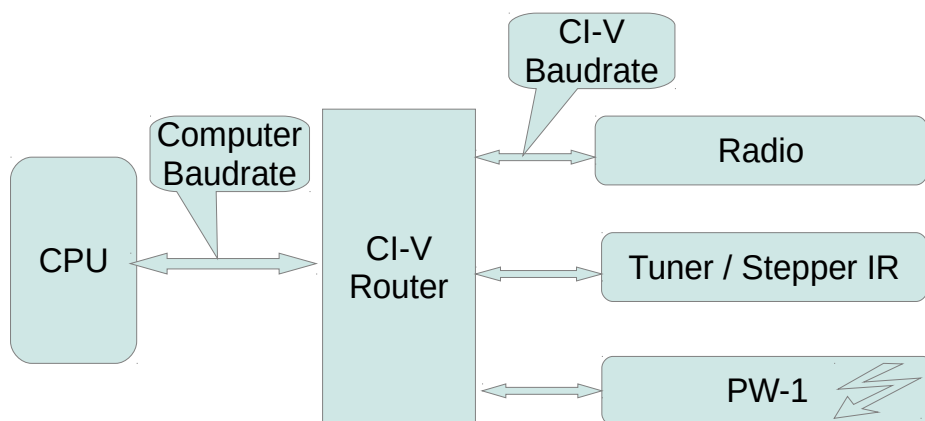
If a device reports a frequency or mode/bandwidth message, it assumed to be a radio.

If the USB port or the computer does an inquiry of a devices frequency or mode/bandwidth and the device ID matches a known radio, the processor will report the last known frequency to the computer without asking the radio. It is therefore REQUIRED that the Icom radio to be operated in “Transceive” mode.

To keep the PW-1 from asking for status, the processor will generate a “transceive” message giving the current frequency for each radio every five seconds to any port which does not have a radio.

Multiple Icom devices maybe put on each CI-V port, but collisions can occur on each port. Do not

put a radio on the same port as a PW-1, There are a number of CI-V listening only devices, such as automatic antennas or antenna tuners or band decoders. These devices can be placed on the same port as the PW-1.



Because the CI-V router is a store and forward message router, each port can operate at a different baud rate. All of the CI-V ports operate at the same baud rate, called the CI-V baudrate. This is so if the router is powered down, the relays will "wire" all the ports together and communications can continue without the advantage of collision protection. The USB port connected to the computer can run at any rate desired. Since the router can automatically respond fast for frequency and mode updates. All host CPU software, such as N1MM or Ham Radio Deluxe, MUST be configured to this baud rate and it must match the computer baudrate set in the Router Configuration.

When powered down, the router connects all CI-V port together. If there are only two devices on the CI-V side of the router, there is lesser chance of a collision that will cause harm. It is advised to keep the router powered whenever anything connected is on. This relay bypass option provides functionality if the router is powered from the USB and the host computer is turned off.

Configuration Settings:

Below are the main menu default values stored in the router's EEPROM:

```

Config CI-V Router
1 -Computer baud rate = 38400
2 -CI-V baud rate = 9600
3 -Transceive msg to other radios = True
4 -Transceive msg to USB = True
5 -USB Echo = True
6 -Subswitch = True
7 -Split OFF when QSY >1MHz = False
8 -Enable driver power level = False
9 -Enable driver power level learn = False
10-Small power table = True
11-Driver power table
12-Icom radio CI-V address UNCONFIGURED
13-Reset all to default values
Which parameter to change?

```

SUBSWITCH: This feature corrects a problem whenever a PC logging program is set to acquire both the MAIN and SUB VFO transceiver frequencies. The acquisitions of both VFO frequencies in past versions of the router code caused CI-V to report the new sub frequency to PW-1.

SUBSWITCH is user configurable.

When SUBSWITCH is enabled (True) the router passes both the Main VFO and SUB VFO frequency and band information to the PC logging software and to other equipment connected to the CI-V bus. This optional feature should be used with great care if your software does this, to assure that the Linear amplifier (e.g. PW-1) does not hot switch between bands while transmitting. This is the default operation of previous versions of software.

The operator may want to use the SUBSWITCH feature when operating SO2V on two different bands, or for cross band split operation. Again, use great caution when doing this, make sure the controlling software does not periodically check the sub VFO frequency.

When SUBSWITCH is disabled (False) the router only passes the main VFO frequency and mode information to other equipment connected to the CI-V bus. (This protection happens regardless of the PC logging program setting; acquiring both VFO conditions or only one). In this mode cross band split operation is not supported. This is the safer of the two options.

USB ECHO: This feature enables feedback of messages sent by the USB port back to the USB port. USB ECHO must be enabled (True) when using DX4WIN. USB ECHO will slightly slow down the transmission of messages from the radio to the controller program.

USB ECHO is user configurable:

TRANSCIVE MSG TO OTHER RADIOS: When enabled, it routes the transceive messages to CI-V ports that do not have radios connected. This setting is important if using two radios and one wishes to turn off the transceive functionality, meaning keep the two radios from tracking one another. This done by turning this parameter to false.

TRANSCIVE MSG TO USB: When true, all “transceive” messages will be passed on to the USB port. When false, no transceive messages are sent to USB port. This is done because some programs (N1MM) suggests running the radio with “transceive” off. To keep such programs happy, turning this parameter will not confuse the PC application software with “transceive” messages.

Icom radio CI-V address: This value must be set to enable either the power table or the Split OFF when QSY >1MHz features are to be used. This is the Icom Radio device ID, where router generated messages are sent. Only one radio can use these features.

Disclaimer: By setting the Icom radio CI-V address, you are knowingly asking the router to change the state of your radio without your permission. Many users have expressed that in doing so violates the 'prime directive', where the router now operate independently of either the control software or the user. This maybe a hazard when a station has guest operators that are unfamiliar with yet another control feature. On the other hand, these tweaks have been known to save amplifiers. Think through the advantages and risks and make an informed choice. Test the operation with your software. It is your decision.

Split OFF when QSY >1MHz: The default is false. When true, whenever a frequency change of greater than 1MHz occurs, a router generated message from controlled Icom Device ID of 0xE7 is

sent to the configured Icom radio CI-V address telling the radio to turn Split OFF, which is a command '0x0F'. Then a "Select Main readout" command 0x07 subcommand 0xD0 is sent, so that if the sub readout was selected, it will be reset. Then a sent frequency command 0x05 containing the new frequency data, such that if the sub readout was selected, the new frequency will now be selected. The net result is an unwinding of both split and sub receiver.

Note: The PC control program is not notified of the change of state and will only discover the change of state if it polls it.

Note: Not all Icom radios support these command.

Driver Power Level Table

Introduction

One feature of the K9JM CI-V router is the ability to store a table of driver (exciter) power level as a function of frequency. If enabled, the router will generate a command to the ICOM radio to set the power pot whenever the radio tunes to a different band segment.

Note: The factory default settings for the CI-V router is to have this featured disabled.

Note: PC based programs which set the RF power may be confused by this feature as messages are sent to the radio and the PC based program will not be notified by this change.

Why?

There are three reasons why to enable this feature:

1. Operation with amplifier other than an Icom PW-1
2. Improved transmit quality while using the Icom PW-1
3. Protect the amplifier

Many amplifiers either do not have ALC or the ALC does not work well with Icom radios. Reduce the amount of ALC adjustment needed by the Icom PW-1 amplifier.

ALC, is a flawed concept. It is analogous to the old idiom, "*closing the barn door after the horse has bolted*". The ALC turns down the driver power level, after the amplifier has gone into distortion. The exciter is best able to limit peak power output without having to rely upon an amplifier to tell it that it was driven to distortion. Using ALC will cause periodic distortions, or key clicks as the amplifier ALC forces the exciter power level down. It is best if the exciter power level is set properly and no ALC is required.

Even with ALC, the exciter will over drive the amplifier for a short duration, which depending on load, maybe enough to cause arching or damage to the amplifier.

It is a good operating practice.

Will this work with my radio?

This feature uses the Icom radio command 0x14, subcommand 0x0A, that can read and write the position of the RF Power control on the radio. Most modern Icom radios support this command, but perhaps not all. Icom IC756 Pro's, 7600, 7700 and 7800 definitely support this feature. Check with your radio's manual if in doubt.

How does it work?

Within the K9JM CI-V router is stored a table of relative power level for each of band segment. The power level is a byte value (0 .. 255) which corresponds to the relative position of the *RF Power* adjustment on the radio. If the "*Enable driver power level*" router configuration value is set to true, upon tuning to a new band segment, the router will generate a command to the Icom radio that will set the RF Power control to the value established in the table.

WARNING!

Most if not all Icom radios will re-read ALL resistive controls if any are touched. This means that if while operating one turns up or down the audio level, or RF gain, or Mic Gain, the radio will read all controls and use these values. If the router gave a commands the radio to go to a given power level, and someone touches, for example the microphone gain, the power level will revert to that level as set by the front panel control. If the router is in the learn mode, once one QSYs to a new band segment, it will read the current RF power level and remember what can be a wrong value.

Having given the warning, I have operated several contests and never noticed a problem, largely because I never touch anything on the radio except the frequency knob.

You have been warned.

CAUTION:

It is possible that a control program on the PC may control the power knob. It is possible that, the PC program remembers what value it last set the power level. If the router issues a command to change the power level, the PC program will not know about this change. If you suspect, or know that your PC controlling program holds on to the state of the RF Power knob, it is advised not to use this feature.

Configuration

Start the router with Pin 53 grounded, so that it is in the 'configuration' mode, as described earlier in this users guide.

FIRST: Setting Icom radio CI-V address

The K9JM CI-V Router can control more than one Icom radio. The power level setting feature can ONLY be used with only ONE radio. Since the router will be generating messages to be sent to the radio, the router must know which radio the messages shall be addressed. The CI-V address must match the value set in your radio. In the example below, my radio's CI-V address is 64 hex. (Icom IC-756ProII).

Note: ICOM always uses hexadecimal for radio CI-V addresses.

Note: ICOM radio CI-V address must be configured before using either the Split OFF when QSY > 1MHz feature, or any driver power level features.

```
Config CI-V Router
1 -Computer baud rate = 38400
2 -CI-V baud rate = 9600
3 -Transceive msg to other radios = True
4 -Transceive msg to USB = True
5 -USB Echo = True
6 -Subswitch = True
7 -Split OFF when QSY >1MHz = False
8 -Enable driver power level = False
9 -Enable driver power level learn = False
10-Small power table = True
11-Driver power table
12-Icom radio CI-V address UNCONFIGURED
13-Reset all to default values
Which parameter to change? 7
7
=>> ERROR! MUST SET ICOM RADIO CI-V ADDRESS <==
```

```
Config CI-V Router
1 -Computer baud rate = 38400
2 -CI-V baud rate = 9600
3 -Transceive msg to other radios = True
4 -Transceive msg to USB = True
5 -USB Echo = True
6 -Subswitch = True
7 -Split OFF when QSY >1MHz = False
8 -Enable driver power level = False
9 -Enable driver power level learn = False
10-Small power table = True
11-Driver power table
12-Icom radio CI-V address UNCONFIGURED
13-Reset all to default values
Which parameter to change? 12
12
Enter radio CI-V address (to enter hex, place 0x before value - eg 0xa3)? 0x64
```

```
Config CI-V Router
1 -Computer baud rate = 38400
2 -CI-V baud rate = 9600
3 -Transceive msg to other radios = True
4 -Transceive msg to USB = True
5 -USB Echo = True
6 -Subswitch = True
7 -Split OFF when QSY >1MHz = False
8 -Enable driver power level = False
9 -Enable driver power level learn = False
10-Small power table = True
11-Driver power table
12-Icom radio CI-V address 0x64 hex
13-Reset all to default values
```

NOTE: The entry of the CI-V address can either be done in decimal (base 10) or hexadecimal (base 16). The program will interpret a string starting with '0x' (zero x) as being hexadecimal. Most of the time, Icom reports the Icom Device ID in hexadecimal, so the '0x' notation should be used.

SECOND – Establish the size of the Driver Power Table

There are two sizes of driver power table, small and large. The 'small' table, has larger power band width, and is designed for broadband amplifiers, such as solid state amplifiers like the Icom PW-1. The not small power table is designed, has smaller power band width, and is designed for narrow band amplifiers, such as vacuum tube amplifiers. The small table has less entries, and is easier to establish, but it provides minimal power control as a function of frequency. The not small table, (large table) has many more entries and takes longer to establish, but provides a greater control of power as a function of frequency.

To change between a small and large power table, the following setting is used:

```
10-Small power table = True
```

Note: Changing this setting will reset the power level for each band segment to the minimum power.

Option 10, details all the power band segments. Each line shows for each power band segment the current setting. The values represents the Icom Radio "RF Power" pot position, given as a value from 0 to 255, and as a percentage. Neither of these number represents the RF Power as measured in watts. The actual driver power in watts is a function of the radio. These values are relative numbers.

The default value is zero... meaning the power level will be set to a minimum value, or 0%. If the value is 255 or 100%, the driver/exciter will be at maximum power.

```
Config CI-V Router
1 -Computer baud rate = 38400
2 -CI-V baud rate = 9600
3 -Transceive msg to other radios = True
4 -Transceive msg to USB = True
5 -USB Echo = True
6 -Subswitch = True
7 -Split OFF when QSY >1MHz = False
8 -Enable driver power level = False
9 -Enable driver power level learn = False
10-Small power table = True
11-Driver power table
12-Icom radio CI-V address 0x64 hex
13-Reset all to default values
Which parameter to change? 11
11
Setting CI-V Baud rate to 9600
IMPORTANT:
WILL CHANGE POWER ON THE RADIO!
RADIO MUST BE CONNECTED AND ON
1 - 1800KHz -> 1900KHz = 0 0.0%
2 - 1900KHz -> 2000KHz = 0 0.0%
3 - 3500KHz -> 3675KHz = 0 0.0%
4 - 3675KHz -> 3850KHz = 0 0.0%
5 - 3850KHz -> 4000KHz = 0 0.0%
6 - 5330KHz -> 5410KHz = 0 0.0%
7 - 7000KHz -> 7150KHz = 0 0.0%
8 - 7150KHz -> 7300KHz = 0 0.0%
9 - 10100KHz -> 10150KHz = 0 0.0%
10 - 14000KHz -> 14200KHz = 0 0.0%
11 - 14200KHz -> 14350KHz = 0 0.0%
12 - 18068KHz -> 18168KHz = 0 0.0%
13 - 21000KHz -> 21250KHz = 0 0.0%
14 - 21250KHz -> 21450KHz = 0 0.0%
15 - 24890KHz -> 24990KHz = 0 0.0%
```

16 - 28000KHz -> 28500KHz = 0 0.0%
17 - 28500KHz -> 29000KHz = 0 0.0%
18 - 29000KHz -> 29500KHz = 0 0.0%
19 - 29500KHz -> 29700KHz = 0 0.0%
20 - 50000KHz -> 51000KHz = 0 0.0%
21 - 51000KHz -> 52000KHz = 0 0.0%
22 - 52000KHz -> 53000KHz = 0 0.0%
23 - 53000KHz -> 54000KHz = 0 0.0%
Select band 1..23 0 or Enter to Return and Save: ?

Config CI-V Router

1 -Computer baud rate = 38400
2 -CI-V baud rate = 9600
3 -Transceive msg to other radios = True
4 -Transceive msg to USB = True
5 -USB Echo = True
6 -Subswitch = True
7 -Split OFF when QSY >1MHz = False
8 -Enable driver power level = False
9 -Enable driver power level learn = False
10-Small power table = True
11-Driver power table
12-Icom radio CI-V address 0x64 hex
13-Reset all to default values
Which parameter to change? 10
10
Resetting Power Band Map Table

Config CI-V Router

1 -Computer baud rate = 38400
2 -CI-V baud rate = 9600
3 -Transceive msg to other radios = True
4 -Transceive msg to USB = True
5 -USB Echo = True
6 -Subswitch = True
7 -Split OFF when QSY >1MHz = False
8 -Enable driver power level = False
9 -Enable driver power level learn = False
10-Small power table = False
11-Driver power table
12-Icom radio CI-V address 0x64 hex
13-Reset all to default values
Which parameter to change? 11
11

IMPORTANT:

WILL CHANGE POWER ON THE RADIO!

RADIO MUST BE CONNECTED AND ON

1 - 1800KHz -> 1812KHz = 0 0.0%
2 - 1812KHz -> 1824KHz = 0 0.0%
3 - 1824KHz -> 1836KHz = 0 0.0%
4 - 1836KHz -> 1848KHz = 0 0.0%
5 - 1848KHz -> 1860KHz = 0 0.0%
6 - 1860KHz -> 1872KHz = 0 0.0%
7 - 1872KHz -> 1884KHz = 0 0.0%
8 - 1884KHz -> 1896KHz = 0 0.0%
9 - 1896KHz -> 1908KHz = 0 0.0%
10 - 1908KHz -> 1920KHz = 0 0.0%
11 - 1920KHz -> 1932KHz = 0 0.0%
12 - 1932KHz -> 1944KHz = 0 0.0%
13 - 1944KHz -> 1956KHz = 0 0.0%
14 - 1956KHz -> 1968KHz = 0 0.0%
15 - 1968KHz -> 1980KHz = 0 0.0%
16 - 1980KHz -> 1992KHz = 0 0.0%

17 - 1992KHz -> 2000KHz = 0 0.0%
18 - 3500KHz -> 3525KHz = 0 0.0%
19 - 3525KHz -> 3550KHz = 0 0.0%
20 - 3550KHz -> 3575KHz = 0 0.0%
21 - 3575KHz -> 3600KHz = 0 0.0%
22 - 3600KHz -> 3625KHz = 0 0.0%
23 - 3625KHz -> 3650KHz = 0 0.0%
24 - 3650KHz -> 3675KHz = 0 0.0%
25 - 3675KHz -> 3700KHz = 0 0.0%
26 - 3700KHz -> 3725KHz = 0 0.0%
27 - 3725KHz -> 3750KHz = 0 0.0%
28 - 3750KHz -> 3775KHz = 0 0.0%
29 - 3775KHz -> 3800KHz = 0 0.0%
30 - 3800KHz -> 3825KHz = 0 0.0%
31 - 3825KHz -> 3850KHz = 0 0.0%
32 - 3850KHz -> 3875KHz = 0 0.0%
33 - 3875KHz -> 3900KHz = 0 0.0%
34 - 3900KHz -> 3925KHz = 0 0.0%
35 - 3925KHz -> 3950KHz = 0 0.0%
36 - 3950KHz -> 3975KHz = 0 0.0%
37 - 3975KHz -> 4000KHz = 0 0.0%
38 - 5330KHz -> 5370KHz = 0 0.0%
39 - 5370KHz -> 5410KHz = 0 0.0%
40 - 7000KHz -> 7050KHz = 0 0.0%
41 - 7050KHz -> 7100KHz = 0 0.0%
42 - 7100KHz -> 7150KHz = 0 0.0%
43 - 7150KHz -> 7200KHz = 0 0.0%
44 - 7200KHz -> 7250KHz = 0 0.0%
45 - 7250KHz -> 7300KHz = 0 0.0%
46 - 10100KHz -> 10150KHz = 0 0.0%
47 - 14000KHz -> 14050KHz = 0 0.0%
48 - 14050KHz -> 14100KHz = 0 0.0%
49 - 14100KHz -> 14150KHz = 0 0.0%
50 - 14150KHz -> 14200KHz = 0 0.0%
51 - 14200KHz -> 14250KHz = 0 0.0%
52 - 14250KHz -> 14300KHz = 0 0.0%
53 - 14300KHz -> 14350KHz = 0 0.0%
54 - 18068KHz -> 18118KHz = 0 0.0%
55 - 18118KHz -> 18168KHz = 0 0.0%
56 - 21000KHz -> 21075KHz = 0 0.0%
57 - 21075KHz -> 21150KHz = 0 0.0%
58 - 21150KHz -> 21225KHz = 0 0.0%
59 - 21225KHz -> 21300KHz = 0 0.0%
60 - 21300KHz -> 21375KHz = 0 0.0%
61 - 21375KHz -> 21450KHz = 0 0.0%
62 - 24890KHz -> 24940KHz = 0 0.0%
63 - 24940KHz -> 24990KHz = 0 0.0%
64 - 28000KHz -> 28150KHz = 0 0.0%
65 - 28150KHz -> 28300KHz = 0 0.0%
66 - 28300KHz -> 28450KHz = 0 0.0%
67 - 28450KHz -> 28600KHz = 0 0.0%
68 - 28600KHz -> 28750KHz = 0 0.0%
69 - 28750KHz -> 28900KHz = 0 0.0%
70 - 28900KHz -> 29050KHz = 0 0.0%
71 - 29050KHz -> 29200KHz = 0 0.0%
72 - 29200KHz -> 29350KHz = 0 0.0%
73 - 29350KHz -> 29500KHz = 0 0.0%
74 - 29500KHz -> 29650KHz = 0 0.0%
75 - 29650KHz -> 29700KHz = 0 0.0%
76 - 50000KHz -> 50500KHz = 0 0.0%
77 - 50500KHz -> 51000KHz = 0 0.0%
78 - 51000KHz -> 51500KHz = 0 0.0%
79 - 51500KHz -> 52000KHz = 0 0.0%

```

80 - 52000KHz -> 52500KHz = 0 0.0%
81 - 52500KHz -> 53000KHz = 0 0.0%
82 - 53000KHz -> 53500KHz = 0 0.0%
83 - 53500KHz -> 54000KHz = 0 0.0%
Select band 1..83 0 or Enter to Return and Save: ?
79 - 51500KHz -> 52000KHz = 0 0.0%
80 - 52000KHz -> 52500KHz = 0 0.0%
81 - 52500KHz -> 53000KHz = 0 0.0%
82 - 53000KHz -> 53500KHz = 0 0.0%
83 - 53500KHz -> 54000KHz = 0 0.0%
Select band 1..83 0 or Enter to Return and Save: ?

```

Most likely you have noticed there lots of bands.

THIRD : Establishing the Driver Power Table

The driver power table is a table of RF Power settings for each band segment that is stored within the EEPROM within the K9JM CI-V Router.

There are two methods for establishing the table, the hard way and the easy way. Knowing the 'hard way' will better ones understanding of the easy way. It also provides the means for checking and tweaking values.

NOTE:

On many Icom Radios the RF Power is a pot. When the radio receives a command to set the RF Power to a different position, it cannot physically move the pot. The radio will ignore the physical position of the pot and use the command value. If the operator turns the pot, usually by about a quarter of turn, the pot will again be the boss of the actual RF Power level.

It is good to expand the window size for the serial communications program so as to view a longer view.

In the configuration menu make sure that the CI-V baud rate is set correctly, then select 10:

10- Driver power table

```

.....
82 - 53000KHz -> 53500KHz = 0 0.0%
83 - 53500KHz -> 54000KHz = 0 0.0%
Select band 1..83 0 or Enter to Return and Save: ?

```

Note: Don't panic. Please remember, this is the hard way.

Select the band segment to which to establish an RF Power knob setting. The program will now control the radio frequency, the user MAY tune the radio to a frequency within the band. The program will send a command to the control the RF Power initially and after each change of value. A '+' will increase the value by the increment value, a '-' will decrease the value by the increment value. The increment value can be changed by hitting a number between 1 and 9. Any key will exit.

Essentially the program has control of the RF Power knob. The user should not be moving the RF Power knob.

Example below:

```
Select band 1..83 0 to Return and Save: ? 9
+ increase
- decrease
1-9 change increment
Any key to exit
```

```
Current Value = 0 0.0%
Current Value = 1 0.3%
Current Value = 2 0.7%
Current Value = 3 1.1%
Current increment = 5
Current Value = 3 1.1%
Current Value = 8 3.1%
Current Value = 13 5.0%
Current Value = 18 7.0%
Current Value = 23 9.0%
Current Value = 28 10.9%
```

In the above example, the user hit + + + **5** + + + + and then the return key. Between keyboard entries, the operator can do test transmissions, to check the power level or tuning. The operator should not be touching the RF Power control as it is being controlled by the configuration program. Normally, power level would start low and be adjusted upwards, hence the default value is the lowest possible driver power.

Doing this for each band segment is the hard way. This is useful to review the driver power table. It is also useful in that if there is a band segment that is never used, for example, if no 5MHz antenna exists. Then the power table can be set to zero, or turning the RF Power level to minimum power. This would reduce transmit power to a minimum if the radio goes into transmit while listening to a band that doesn't have an antenna.

The Easy Way to build a Power Table.... let it learn by watching you.

There are two controls

```
8 -Enable driver power level = False
9 -Enable driver power level learn = False
```

Note: To enable either of these parameters, the Icom radio CI-V address must be set.

If "Enable driver power level" is true, then the router will send an RF Power command to the radio every time the radio is tuned to a new band segment.

If "Enable driver power level learn" is true. Then the program will read the RF Power level control whenever it leaves a band segment.

What does this mean?

If both are true, and the operator does NOT adjust the RF Power control while in a band segment, then when the router reads the value upon leaving a band segment, it will get the value that was set when entering the band segment, and thus the value will not be changed.

Note: While this behavior is true for the Icom 756ProII it has not been confirmed on all radios. Your mileage may vary.

If both are true and remember the router default value is 0, then the first time on each band segment, the drive level will start low and the operator will need to adjust the drive level. Eventually, as one visits all the band segments, the router will "learn" where the RF Power level should be set.

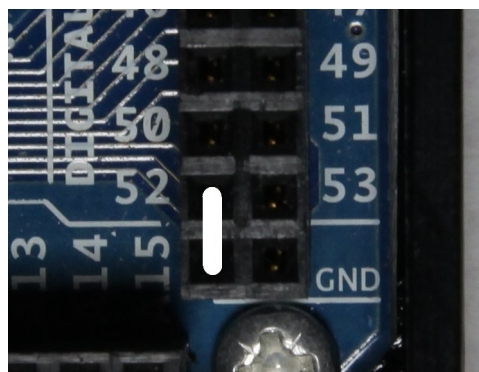
If you do not wish to have the router keep resetting the power level, set "Enable driver power level" to false and visit all band segments while "Enable driver power level learn" is true and fill out the table by adjusting the RF Power knob for each segment.

If the table has been established and one does not want changes to the table, set "Enable driver power level learn" to false.

If running a contest without an amplifier, (eg NAQP) then set both parameters off and this feature is disabled. The map will remain in the router's memory.

Warning: DO NOT disconnect ALC. With the PW-1 make sure ALC is adjusted properly. ALC plays a vital role at turning back the driver power to the amplifier during a fault condition. *Operating the PW-1 without the ALC properly adjusted can damage to the PW-1.* This feature makes it so that ALC will not be used often during normal operation.

CI-V Interface board test



In order to test the combination CI-V interface board and the Arduino Mega2560, start the CI-V router with Pin 52 on the Arduino board connected to ground. This can be done by placing the jumper to the adjacent ground pin, as shown above. When the router is started with Pin 52 grounded, a simple program runs that tries to send a message from each CI-V port to the other CI-V ports every 100ms. To see the results, one must use PuTTY (or your favorite communications program) to connect to the router at 115200 baud rate through the USB port.

For this program, the ports are numbered 1, 2 and 3. Where port one is the CI-V port closest to the USB connector. Port 2 is in the middle, and Port 3 is the port closest to the coaxial DC power connector.

Using a CI-V cable, connect it from one port to another port on the router.

If during each 100 ms test period, if a message was properly sent from port 1 to port 2, the message

"1->2" will appear on computer terminal. Likewise if a message is sent properly from port 2 to 3, the message "2->3" will appear on the computer terminal.

Below is an example output as seen on PuTTY. Each line of output represents the result of the 100ms test period.

```
CIV Interface Test Program
No connection
No connection
1->2 2->1
1->2 2->1
1->2 2->1
1->2 2->1
1->2 2->1
No connection
No connection
No connection
No connection
1->3 3->1
1->3 3->1
1->3 3->1
1->3 3->1
```

For about a half a second, the cable was connected between ports one and two. The fact that both 1->2 and 2->1 appears on a single line means that messages went in both direction properly. The cable was quickly moved from port 2 to port 3, and messages were then successfully sent in both direction. The above example shows that all ports are working properly. To double check, connect port 2 to port 3.

If there is always "No connection" regardless on cable position... something is wrong. Maybe the cable is bad? Say is 1->2 appears but 2->1 does not appears, that means that either port 2 isn't sending, or port 1 isn't receiving. Moving the cable around will quickly determine where the problem is.

Note: This test is not effect by, nor does it change ANY of the configuration of the router.

Note: This program is also useful for checking CI-V cables.

Hints and Kinks

CI-V Message Sniffer:

A useful tool for debugging and understanding is the Icom CI-V message is the Sniffer Tool.

Available at

http://k9jm.com/CIV_Router/CIVSniffer.zip

In the zip file is a detailed description of how to use the tool. It permits one to use any CI-V interface to make their PC into a CI-V message monitor, sniff out messages.

Transceive messages:

All Icom radios have a setting called "Transceive" on/off. When on, the radio sends a "transceive" message on the CI-V whenever the frequency or mode changes. For example these messages are sent when the dial is turned or the band is changed. These messages are used to quickly have a slave device (eg. PW-1 or SteppIR) respond to a radio status change. It also is used by Icom radios, such that if "Transceive" is on, another radio will follow to the same frequency, thus multiple radios can be tuned in unison, or in a "Transceive" like operation.

If you are using the CI-V router, you have other devices on the bus that need the "Transceive" to be on in the radio. As a user, you want "Transceive" to be enabled in the radio.

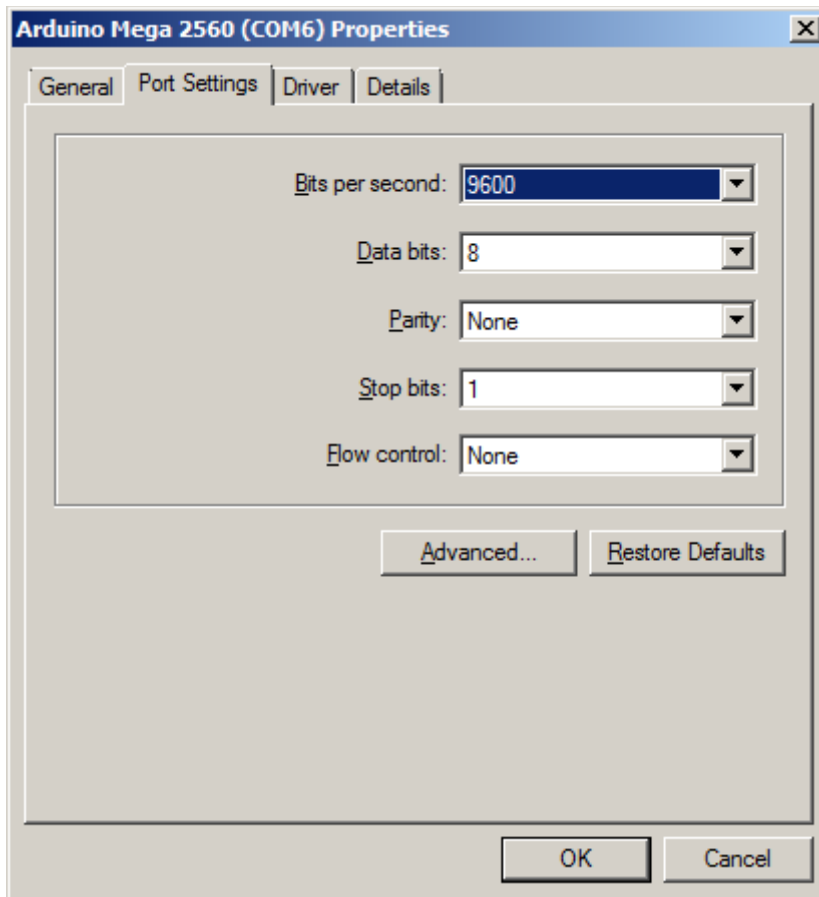
Physical:

It is possible for the center lead of J2 to short to the grounded body of the USB connector of the Arduino board. It is suggested to place electrical tape on the top of the USB connector, and bottom of the CI-V router board near J2.

The CI-V Router board needs to be fully seated. Friction and the plastic enclosure usually keeps them together, For addition insurance, a small tie wrap, or string between the holes near J1 can be used.

Changing COM Ports:

Within Computer Management on your windows machine, if you click on a COM port and select Port Settings, a window like this one appears



These are the default settings for the port. Which is to say, that if a program doesn't configure the port before opening, these are the settings that will be in place at boot time. Since every program I have ever seen, sets the COM port parameters, this screen is meaningless. It is useful because of the "Advanced" button, which clicking on it will permit you to change the COM port number.

Interfacing to older CI-V devices

The CI-V Router pulls up the bus with a 4.7K ohm resistor, supplying only one milliamp of current for the input of any device. For "modern" CMOS inputs, this is more than enough current to pull up the capacitance for long cables. If you have a device with an older, higher input current logic, such as TTL, the pull up resistor should be dropped. Look at the schematic in the CIV Router Board and pick one output to be the high current output, and change either R1, R2 or R3 from 4.7K to 1K ohm.

http://k9jm.com/CIV_Router/CIV%20Router%20Board.pdf

The CI-V router can pull well over 100ma to ground, so it can easily handle the extra current. Icom does not specify the loading of the CI-V bus, but in general each node on the bus should pull up at least enough to provide it's own input current.

Deleting COM Ports in Windows

There are many PC programs that limit the number of COM Ports one can have in your system. When you install the drivers, your computer will assign the COM port number which is next available in your machine. If you are like me, over time the next available COM port will quickly become COM 223. Most of them are COM ports for things that I no longer have or use. Here is how to delete unused COM ports from your computer.

Open the Command Prompt do all these steps from the same command prompt.

1. Right-click "Command Prompt" in Accessories and choose "Run as Administrator" if using Vista or Windows 7
2. Enter "set devmgr_show_nonpresent_devices=1" – without the quotes obviously
3. Enter "start devmgmt.msc"
4. In the box that opens, select "Show hidden devices" in the 'view' menu.

Now if you expand the section on COM ports, all the COM ports that have ever been created will be displayed, the non present ones being in grey. You can uninstall away anything that you don't want (right click, select uninstall).

USB Port Management:

For USB port management, I would highly recommend USBDeview available for free at www.nirsoft.net It tells you more about the current and past USB ports than you'll ever want to know and provided me with some insight into a problem associated with the ICOM USB Driver software. Suggestion by Ken Goodwin K5RG

Common Error:

The PW-1 has two 'remote' or CI-V that are internally are wired together. Do NOT wire each of these to a separate port of the router.

Acom 2000

I have worked with Bill, N3RR getting the K9JM router to work with an Icom radio and the Acom 2000 amplifier. The Acom, when connected to the CI-V bus will act like a controller whose Icom address is 0xE0, identical to that of all other software programs. This confuses the router, much like having two Ethernet MAC addresses on the same network. Also, the Acom does not have a 'normal' CI-V interface, and to make electrical connection, much more pull up current to 5 volts is required. This can be accomplished by reducing the value of a resistor on the K9JM CI-V interface board. I have a cut of software designed to handle the Acom 2000 and can easily modify the interface board to operate with the Acom 2000. Contact me for further details.

WARRANTY

Unconditional 30 day warranty. If the unit doesn't perform for any reason, send it back and get your money back. One year warranty for manufacturing defects, free repair or replacement. Liability is limited to repair and/or replacement of the CI-V router. The device is not intended for medical applications. Arduino warranty applies to the Arduino board.